



MPS WINDSURFER WORLD CHAMPIONSHIPS 2023

Organising Authority (OA)

South of Perth Yacht Club

Coffee Point, 2 Canning Beach Rd Applecross, Perth Western Australia 6153

GENERAL & COURSE RACING SAILING INSTRUCTIONS (SI)

[DP] denotes a rule for which the penalty is applied according to the RRS Introduction – “Notation”.

[NP] denotes that a breach of this rule will not be grounds for a protest by a board. This changes RRS60.1(a).

[SP] denotes a rule for which a standard penalty may be applied by the Race Committee (RC) without a hearing.

This changes RRS A5.

1. RULES

- 1.1 The event will be governed by the rules as defined in the Racing Rules of Sailing (RRS).
- 1.2 RRS Appendix B - Windsurfing Fleet Racing Rules, **shall** apply.
- 1.3 RRS B3 31 - Touching a Mark is changed to: While racing, a board shall not touch a starting mark or a finishing mark. A board may touch any other mark but shall not hold onto it.
- 1.4 RRS Appendix B4 42 – Propulsion is changed as follows:
International Windsurfer Class Association, Class Rules (Status: Provisional dated 2022-07-05) Part 2, Section C1.1 (d).
A board shall be propelled only by the action of the wind on the **sail** and by the action of the water on the **hull** through the unassisted actions of the competitor except that when:
 - (i) Course Racing
and
 - (ii) competitors are sailing to windward or on a close-hauled course pumping (continuous and/or repetitive movement of the rig to induce windflow over the sail) is prohibited except for the first 30 seconds after the starting signal.”
- 1.5 RRS Appendix P shall apply.
- 1.6 Supplementary Sailing Instructions (SSI's) will be issued for the Marathon and the Slalom Events.

2 CHANGES TO SAILING INSTRUCTIONS

Any change to the sailing instructions will be posted before 0800 on the day it will take effect, except that any change to the time of the first warning signal of the day will be posted by 1800 on the day before it will take effect.

3 COMMUNICATIONS WITH COMPETITORS

- 3.1 Notices to competitors will be posted on the official notice board located in the Race Office in the Centreboard Clubhouse at South of Perth Yacht Club.



3.2 [DP] While racing, except in an emergency, a board shall not make voice or data transmissions and shall not receive voice or data communication that is not available to all boards.

4 CODE OF CONDUCT [DP]

- 4.1 Competitors and support persons shall comply with reasonable requests from race officials.
- 4.2 Competitors and support persons shall affix advertising provided as required by the OA in accordance with any instructions for its use and without interfering with its functionality.
- 4.3 Each competitor shall wear an event lycra vest or bib provided by the OA outside of their clothing in a functional way that displays the competition number and advertising as intended and instructed.

5 SIGNALS MADE ASHORE

- 5.1 Signals made ashore will be displayed at the Centreboard Club Lawn Flagpole.
- 5.2 When flag AP is displayed ashore, '1 minute' is replaced with 'not less than 30 minutes' in Race Signals AP.
- 5.3 The eastern arm will display code flag Alpha for the eastern course area Alpha.
- 5.4 The western arm will display code flag Bravo for the western course area Bravo.

6 SCHEDULE OF RACES

6.1 The following program is indicative and subject to variation.

Day/Date	Event	Time	Location
Friday 29/12/2023	Registration	0900 – 1800	SoPYC
	Opening Ceremony (Dinner included for sailor)	1930	SoPYC
Saturday 30/12/2023	Briefing	1000	SoPYC
	First start- Warning Signal not before	1100	
Sunday 31/12/2023	Briefing	0930	SoPYC
	First start- Warning Signal not before	1030	
	New Years Eve Party (Dinner included for sailor)	2000	SoPYC
Monday 1/1/2024	Briefing	1200	SoPYC
	First Start- Warning Signal not before	1300	
Tuesday 2/1/2024	Briefing	0900	SoPYC
	First Start- Warning Signal not before	1000	
Wednesday 3/1/2024	Briefing	0900	SoPYC
	First Start – Warning Signal not before	1000	
Thursday 4/1/2024	Briefing	0900	SoPYC
	First Start- Warning Signal not before	1000	



	Last Start – No Warning Signal after	1500	
	Prize Giving and Closing Ceremony	1800	

- 6.2 To alert boards that a course race or sequence of races will begin soon, the orange starting line flag will be displayed with one sound at least three minutes before a warning signal is made.
- 6.3 Up to 9 Course Races are scheduled for each division and up to 4 course races per day (a maximum of 3 course races back-to-back).
- 6.4 **Changes to the first warning signal of the day** will be advised by Notices to Competitors prior to 1800 on the previous day and by the briefing prior to each race session.

7 FLEETS AND DIVISIONS

Competition divisions (refer Notice of Race (NoR)) will be defined as the following split of competitors:

Division A:	Light weight	(may include U15 – U19 sailors)
Division B:	Medium weight	(may include U15 – U19 sailors)
Division C:	Heavy weight	(may include U15 – U19 sailors)
Division D:	Super Heavy weight	(may include U15 – U19 sailors)
Division F:	Women	(may include U15 – U19 sailors)

8 CLASS FLAGS

- 8.1 The Division Class flag is a windsurfer class logo on a solid colour background.
- 8.2 Divisions will be advised by the Race Committee (RC) and signalled by flag background colour as shown by the following example:

Light weight	Green
Medium weight	Red
Heavy weight	Yellow
Super Heavy Weight	Blue
Women	Pink

9 RACING AREA

The racing areas are the regions that extend 50 metres beyond the course including the start and finish lines and their extensions in which a board normally sails while racing. The racing areas are Melville Water East (Alpha) and West (Bravo) – SI Addendum A shows the general location of the course racing areas.

10 COURSES

- 10.1 The diagram in Addendum B shows the probable courses for the **Course Racing** event. The RC may change the course racing format to suit weather and logistics for the event.
- 10.2 Further information for each course and event will be made available on the official notice board.
- 10.3 The course to be sailed, Course 2 or Course 3 will be indicated by a flag with either the number 2 or 3 at the warning signal.



11 MARKS - Course Racing

- 11.1 Course marks are inflatable buoys, Yellow for Alpha, Pink for Bravo.
- 11.2 New marks, refer SI 13, are inflatable buoys, Green for Alpha, Red for Bravo.
- 11.3 Start mark – RC vessel and a pin end vessel with orange flag.
- 11.4 Finish mark – RC vessel and blue inflatable buoy.

12 THE START

- 12.1 Races will be started using RRS B3 26.1 System 1 (for Upwind Starts).
- 12.2 The starting line is between a staff displaying an orange flag on the race committee vessel at the starboard end and a staff displaying an orange flag on the pin vessel at the port end of the line.
- 12.3 [DP] Boards whose warning signal has not been made shall avoid the starting area during the starting sequence for other races.
- 12.4 A board that does not start within 4 minutes after her starting signal will be scored Did Not Start (DNS) without a hearing. This changes RRS A5.
- 12.5 One long sound signal may be made to indicate 30 seconds after the starting signal.

13 CHANGE THE NEXT LEG OF THE COURSE

To change the next leg of the course, the RC will lay a new mark and remove the original mark as soon as practicable. When in a subsequent change a new mark is replaced, it will be replaced by an original mark.

14 THE FINISH

The finishing line is between a staff displaying a blue flag on the RC vessel at the port end and a blue finish mark buoy at the starboard end.

15 PENALTIES FOR ALL DIVISIONS

15.1 Appendix P - Penalties for All Divisions (Course racing only)

RRS Appendix P2.1. First Penalty is changed to:

When a board is first penalized under rule P1.2 her penalty shall be a **360°-Turn Penalty** under rule B 44.2. If she fails to take it she shall be disqualified without a hearing.

15.2 RRS APPENDIX B4 44 PENALTIES AT THE TIME OF AN INCIDENT

44.1 Taking a Penalty is changed as underlined.

A board may take a 360°-Turn Penalty when she may have broken one or more rules of Part 2 in an incident while racing **or when she may have broken rule 31 by touching a start or finish mark.** However, if the board caused injury or serious damage or, despite taking a penalty, gained a significant advantage in the race or series by her breach, her penalty shall be to retire.

44.2 360°-Turn Penalty

After getting well clear of other boards as soon after the incident as possible, a board takes a 360°-Turn Penalty by promptly making a 360° turn with no requirement for a tack or a gybe. When a board takes the penalty at or near the finishing line, her hull shall be completely on the course side of the line before she finishes.



16 TIME LIMITS

16.1 Course Racing

The Mark 1 Time Limit, Course Race Time Limit (see RRS 35), and the Finishing Window are shown in the table below.

Mark 1 Time Limit	Race Time Limit	Finishing Window	Target Time
<i>10 mins</i>	<i>40 mins</i>	<i>15 mins</i>	<i>30 mins</i>

16.2 If no board has passed the first mark within the Mark 1 Time Limit, the race will be abandoned.

16.3 The Finishing Window is the time for boards to finish after the first board sails the course and finishes. Boards failing to finish within the Finishing Window, and not subsequently retiring, penalised or given redress, will be scored DNF without a hearing.

17 HEARING REQUESTS

17.1 The protest time limit is 60 minutes after the last board finishes the last race of the day or the RC signals no more racing today, whichever is later. The time will be posted on the official notice board.

17.2 Hearing request forms are available from the race office.

17.3 Notices will be posted no later than 30 minutes after the protest time limit to inform competitors of hearings in which they are parties or named as witnesses. Hearings will be held in the protest room, located in the Main Clubhouse in the Committee Room via Entry 1, beginning at the time posted.

17.4 A list of boards that have been penalised for breaking RRS B4 42 under RRS Appendix P will be posted.

17.5 The right of appeal from a protest committee (PC) decision is denied as provided in RRS B5 70.5.

18 SCORING – refer NoR

18.1 Each Division will be scored separately.

18.2 **Course Racing**

(a) Three (3) course races are required to be completed to constitute a series.

(b) When fewer than 5 course races have been completed, a board's course racing series score is the total of her course race scores.

(c) When from 5 to 7 course races have been completed, a board's course racing series score is the total of her course race scores excluding her worst score.

(d) When 8 or more course races have been completed, a board's course racing series score is the total of her course race scores excluding her two worst scores.

18.3 **Slalom and Marathon** Race scoring will be incorporated into their SSI's.

18.4 **Overall Scores and Ties**

Overall score is the sum of:

- course racing final position (division results)
- course racing average points, excluding discards (division results)
- slalom final position (division results)
- marathon final position (division results)



TIE BREAKS FOR OVERALL ONLY.

A tie is broken in the following order:

- 1 - best place in course race (division results)
- 2 - best course racing average points, excluding discards (division results)
- 3 - best place in slalom race (division results)
- 4 - best place in marathon race (division results)
- 5 - If all of the above will not solve the tie break, final criteria is the OVERALL RESULT IN MARATHON (which cannot be the same by definition).

19 SAFETY REGULATIONS [NP]

- 19.1 [DP] RRS 40.1 – Personal Flotation Devices - applies at all times while afloat. Competitors shall always wear a personal flotation device that shall conform to the minimum standard ISO 12402-5 (level 50) whilst afloat.
- 19.2 [SP] It is mandatory to **Sign On** before launching and **Sign Off** upon returning to shore, via the paper form every day.
- a) The SP penalty for each infringement of this instruction is 2 points.
 - b) Failure to sign on, the penalty will be added to the first race of the day,
 - c) Failure to sign off, the penalty will be added to the last race of the day.
- 19.3 [DP] A board that retires from a race shall notify the race committee. At the first reasonable opportunity the boat shall complete the retirement declaration form.

20 REPLACEMENT OF EQUIPMENT [DP]

Substitution of damaged or lost equipment is not allowed unless authorised in writing by the Regatta Director/RC. Requests for substitution shall be made to the RC at the first reasonable opportunity, which may be after the race.

21 EQUIPMENT AND MEASUREMENT CHECKS

- 21.1 Each competitor shall register at the registration desk and complete all required registration and equipment inspection formalities before racing. A competitor that does not complete all required registration and equipment formalities will not be entered to the event under RRS 75.
- 21.2 Equipment may be inspected at any time for compliance with the class rules, NoR and SI's.
- 21.3 [DP] When instructed by a race official, on the water, a competitor shall proceed to a designated area for equipment inspection.

22 OFFICIAL VESSELS

Official vessels will be identified as follows:

Race Committee Vessels	Flag	"RC" or green & white flag
Race Support Vessels	Sign or Flag	"Safety"
Jury Vessels	Flag	"J" or "Jury"
Media Vessels	Flag	"M" or "Media"



23 SUPPORT TEAMS [DP]

- 23.1 Coach and support vessels shall stay outside areas where boards are racing from the time of the preparatory signal for the first fleet to start until all boards have finished or retired or the RC signals a postponement or abandonment except to assist a crew in distress or at the request of the RC.
- 23.2 Support vessels shall comply with any reasonable request from a race official.
- 23.3 Support vessels personnel shall always wear a personal flotation device that shall conform to the minimum standard ISO 12402-5 (level 50) whilst afloat.
- 23.4 **The kill cord** shall be worn at all times when the engine is running.
- 23.5 All coach vessels shall carry a rope that floats (minimum 15metres long and 8mm thick).
- 23.6 An alleged breach of SI 23 may be referred to the RC and PC. The RC may instruct the OA to withdraw accreditation and access rights to the regatta venue and the course areas from the offending party without the option of replacement during the regatta.
- 23.7 Each coach/support vessel is required to maintain a listening watch on VHF channel 69 (Alpha Course) or Channel 75 (Bravo Course).

24 TRASH DISPOSAL

Trash may be placed aboard official or support team vessels.

25 BERTHING [DP]

Boards shall be kept in their assigned places while in the boat park.

26 RISK STATEMENT

RRS 3 states: 'The responsibility for a competitors decision to participate in a race or to continue to race is hers alone.' By participating in this event each competitor agrees and acknowledges that sailing is a potentially dangerous activity with inherent risks. These risks include strong winds and rough seas, sudden changes in weather, failure of equipment, board handling errors, poor seamanship by other boards, loss of balance on an unstable platform and fatigue resulting in increased risk of injury. **Inherent in the sport of sailing is the risk of permanent, catastrophic injury or death by drowning, trauma, hypothermia or other causes.**

27 INSURANCE

Each participating board shall be insured with valid third-party liability insurance with a minimum cover of **AUD10,000,000** per incident or the equivalent.

ADMINISTRATION:

Link to event page: <https://sopyc.com.au/windsurfer-worlds-2023/>

<https://sopyc.com.au/on-water/off-the-beach/off-beach-regattas/windsurf23states/>

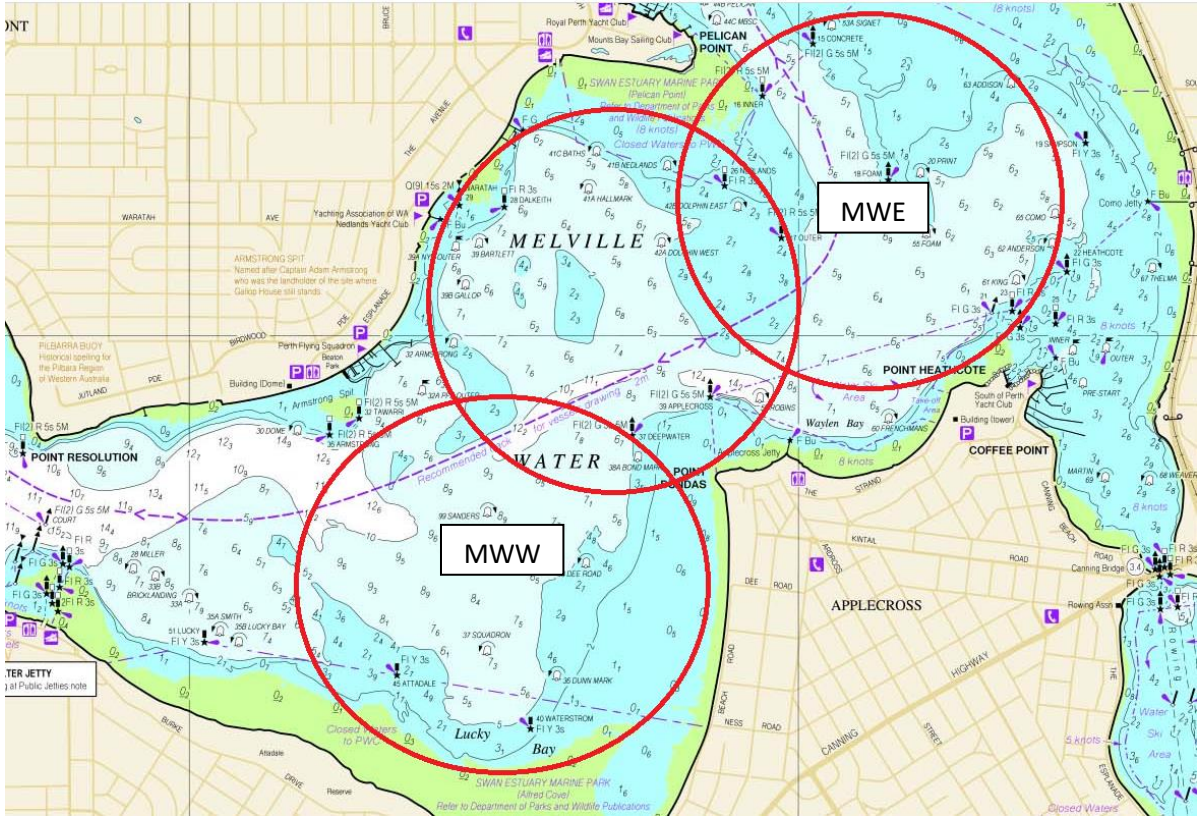
The race office is located in the Centreboard Club House at South of Perth Yacht Club

Telephone: 08 9364 5844

Email: sailingadministrator@sopyc.com.au



Addendum A
[Site Map]
[Course Areas]

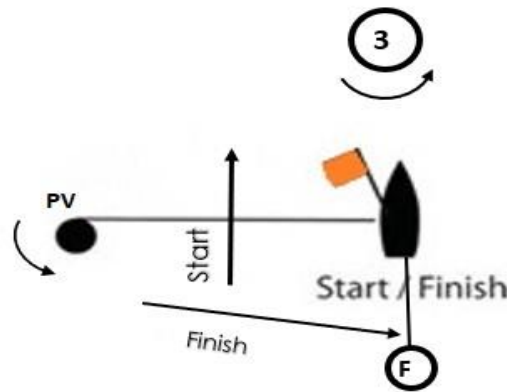
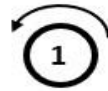


Addendum B

[Course Racing Courses – Windward Leeward(s) and Triangle 2 laps, 3 laps]

Course 2 will be recognized through the display of a flag featuring the number 2.

Course 3 will be recognized through the display of a flag featuring the number 3.



Course	Mark Rounding Order
2	Start – 1 – 3 – 1 – 2 – PV - Finish
3	Start – 1 – 3 – 1 – 3 – 1 - 2 – PV - Finish