



South of Perth Yacht Club
2024 Power Yacht Season

RED BOOK

**NOTICE OF EVENTS
AND
GENERAL TIME TRIALLING INSTRUCTIONS**

The Power Section would like to thank all our sponsors for the upcoming season and recognize your valuable contribution in supporting this event!



Flag Officers

Commodore	Troy Dalglish
Vice Commodore	Dave Markham
Rear Commodore	Christina Heydon
Imm. Past Commodore	Michael Cook

Organising Committee

Regatta Chairman	RC Christina Heydon
Starter	Margaret Cooper
Courses	John Meldrum / Steve Wall
Power Captain	Maria Cook
OWG Administrators	Matt Doyle & Tait Kunzli

Power Yacht Section Committee

Captain	Maria Cook
Vice-Captain	Jason Claricoates
Secretary	Sue Smith
Treasurer	Claude Mancini
Membership	Debbie Swain
Publicity Officer / Scribe	Justine Barron
Social Co-ordinator	Judy Bailey
Trophy Officer	Lynne Cooper
CPYA Delegate	Darryl Wilkes
Pens and Moorings & Compliance	John Cooper
Sponsorship	Graeme Phillips

Courses & Team Selection Committee

John Meldrum
Steve Wall
Jason Claricoates
Darryl Wilkes

General Manager

Michael Sassella

OWG Administrator's

Matt Doyle & Tait Kunzli

SOUTH OF PERTH YACHT CLUB (INC.)

NOTICE OF EVENTS AND GENERAL TIME TRIALLING INSTRUCTIONS

2024 SEASON

1. RULES

- 1.1 All events will be governed by the Time Trialling rules 2021 2.2 of The Cruising & Power Yacht Association of Western Australia (Inc) (The CPYA Rules) except as amended by this Notice of Events and Time Trialing Instructions
A copy of the CPYA Rules is available at www.sportspage.com.au for perusal. Competitors are encouraged to download their own copy from the Sportspage website.
- 1.2 CPYA events included in the South of Perth Yacht Club (SoPYC) program are solely governed by CPYA Rules, the notice of event and sailing instructions.

2. ELIGIBILITY

- 2.1 The Skipper of an eligible boat shall be a financial:
 - (i) Ordinary, Country, Honorary Life member of the SoPYC
 - (ii) Crew or Associate member of the SoPYC. If applicable to the entry, the Navigator must be from a category listed in 2.1(i).
- 2.2 An eligible boat shall maintain for the duration of the season insurance cover against third party claims to the minimum value of ten million dollars (\$10,000,000).

3. ENTRY

- 3.1 The Organising Committee reserves the right to reject a boat's entry without reason.
- 3.2 The Organising Committee shall be comprised of the Starter, RC Regatta, Chairman of Courses & Handicaps, and the Sailing/Power Administrator.
- 3.3 All craft on the Club register wishing to compete shall lodge a nomination via the entry portal on the Club website or on the prescribed form with the Sailing/Power Yacht Administrator.
- 3.4 All Invitational (I) & State (S) events will have their own separate event registrations. Events will be posted on the SoPYC website under the Power Sections 'Regatta' page.

4. RESPONSIBILITY

Attention is drawn to CPYA Rules General Rule 23.2 which states: "It shall be the sole responsibility of each boat's skipper to decide whether to start or to continue to compete."

5. MARINA COMPLIANCE

Each competing boat shall carry its current marina compliance certificate on board and comply with that certificate. Failure to do so may result in disqualification. Spot inspections may be made at any time during the season by the appointed officer.

6. CREW

6.1 Whilst competing, a boat shall carry at least one other person (navigator) in addition to the skipper.

6.2 A navigator participating in more than three (3) events must be a member or associate level member of the South of Perth Yacht Club.

6.3 Must also comply as part of SI 2.1

7. COMPETING STATUS

7.1 All Vessels prior to starting times being released shall inform the Sailing/Power Administrator of any changes to the competing status from week to week. When a vessel competes, it will remain on the start list until notified otherwise, the same pertaining to a vessel that doesn't compete a given week, they would need to advise upon returning to competing status.

7.2 Failure to notify the Sailing/Power Administrator may result in scoring penalties at the discretion of the 'Starter'.

8. COURSES AND STARTING TIMES

8.1 The program for the season together with the course number to be sailed and the start time of each event is shown in Attachment 1 of Part 1 of the Red Book and on the Sportspage website, www.sportspage.com.au.

8.2 Course sheets listing all marks and showing the order and side to pass is shown in Attachment 3 of the Red Book and on the Sportspage website.

8.3 The starting time for each nominated boat together with the name of the craft, its competition number and handicap will be posted on the SoPYC section of the Sportspage website and the notice board at least 24 hours before the scheduled start time of the event unless otherwise decided by the Organising Committee.

8.4 The primary notice board for all events shall be the notice board in the foyer outside of the OWG Office within SoPYC. Notices may be posted at other locations (such as the internet) for the purposes of convenience. In the event of conflict between the notices, the primary notice board shall be deemed to be correct.

9. CHANGES TO TRIALLING INSTRUCTIONS

Any changes to trialling instructions, courses or calculated times will be advised by a notice posted on the Notice Board at least two (2) hours prior to the start of the affected event. Code Flag L will be displayed on the main flagpole at SoPYC to indicate a change has been posted.

10. FLEETS

- 10.1 If less than 20 boats start in an event, they shall be scored as one fleet.
- 10.2 If 20 or more boats start in an event, then they shall be scored as two fleets being "Port" and "Starboard".
- 10.3 The division into fleets shall be by random selection as soon as practicable after the last boat has started.
- 10.4 Each fleet shall constitute a separate event, but the season's consistency and championship points will be calculated from the scores of a combined fleet as a single event.

11. FLAGS AND IDENTIFICATION

- 11.1 A boat shall fly a club burgee over the class flag and carry identifying numbers when competing.
- 11.2 Flags and competition numbers shall be positioned so as to be clearly visible from both port and starboard sides throughout the event. Competition numbers and flags inside windows screens or railings are not acceptable.

12. OFFICIAL TIME

The official time shall be the Official Time published on the CPYA Home Page at www.sportspage.com.au and may be displayed on a device in the foyer.

13. STARTING AREA

The starting area is the width of the start line buoys and extends approximately 50 metres to the South side of the start line to form a rectangular area.

14. START AND FINISH LINE

- 14.1 The start and finish line is an extension of the line joining the two triangles mounted on the start box.
- 14.2 The two buoys in the vicinity to the East of the Start Box mark the outer and inner extremities of the line. A boat which fails to pass between these buoys when starting shall be disqualified or when finishing shall be retired.

15. STARTING SEQUENCE

- 15.1 Ten minutes before the start time of the event the class flag will be displayed, and a sound signal made.
- 15.2 Five minutes before the start, the preparatory signal, International Code Flag "P" will be displayed, and a sound signal made.
- 15.3 The start of the event will be signaled by lowering of the class and preparatory flags and the making of a sound signal.
- 15.4 All flags will be displayed, and sound signals made from the SoPYC Start Box or Race Committee Boat.

15.5 Each boat shall start at its allotted time irrespective of the occurrence or absence of the signals and any such occurrences or absences shall not be grounds for protest.

16. EXCLUSION ZONES

16.1 The area west of a line joining the inner start buoy and the 'pre-start' buoy approximately 65 metres east of Jetty 4 is an exclusion zone. Competitors shall not traverse this area other than for essential access to or exit from the pen area. Any boat movement in the exclusion zone is subject to a maximum speed limit as posted.

16.2 After the 10-minute signal, a boat shall not enter the start area or follow any part of the course unless starting, or having started, competing in the event.

17. PRE-START

17.1 A boat shall not interfere with any other craft maneuvering to start or competing.

17.2 A boat shall not be moored, anchored, or beached later than 10 minutes prior to its allocated start time.

18. STARTING

When starting, a boat shall:

18.1 enter the start area at its nominated speed or 8 knots whichever is the lesser and;

18.2 maintain a constant speed and course while in the start area and;

18.3 steer a course at approximately 90 degrees to the start line

19. LATE START

If for any valid reason a boat cannot start at its allotted time, the Starter may allot a new start time. The issue of a new start time may be subject to a penalty of 10 points should the late boat not adequately explain their circumstances to the Starter.

20. SPEED RESTRICTED AREAS

Speed limits applying to any part of the course must be observed at all times. These areas are designated in the course sheets and show the speed limit applying from the previous mark. The calculated times in restricted areas are based on the speed limit or the nominated speed of the boat, whichever is the lesser.

21. CLEARANCES

21.1 Clearances shown in the Course Sheets (e.g. ST-30M) are the minimum distances by which these marks are to be passed. These distances are set for safety reasons. When a mark is shown on a Course Sheet with a clearance, it shall not be used as a checked Mark.

21.2 Where Knot Spit is shown as PT-30M heading upriver to Quarry Spit, skippers shall observe this as 30 metres **before** Knot Spit to make the turn to Quarry and shall not pass Knot Spit and then turn.

22. HEATHCOTE

Heathcote Spit will not be used as a timed mark either immediately before or after the outer start line buoy when that buoy is used mid-course as a mark for turning.

23. REQUIRED SIDE

A boat shall go fairly around the course rounding or passing the marks on the required side and in the correct order. Failure to do so may result in disqualification or a 10-point penalty at the discretion of the Starter. The vessel's check point time will be taken from the passing of the mark. This changes CPYA Rule 8.5.

24. RETIREMENTS

Retirements are to be notified to the starter as soon as practicable by radio communication (VHF69) or by hailing when passing the start box. Retiring craft should not pass through the starting area.

25. TIME LIMIT

A boat which fails to finish within 15 minutes of its scheduled finishing time will be scored as retired.

26. SCORING

26.1 Each boat which finishes an event shall score points as follows:

First Place	1	Fourth Place	4
Second Place	2	Fifth Place	5
Third Place	3	Sixth Place	6
and so on...			

26.2 The score for a retirement shall be the number of starters plus 1.

26.3 Results supplied to SoPYC from CPYA state heats (not kindred club Invitation events) will be imported to SoPYC club records and will be scored as Club Championship and/or Consistency events. Invitation events conducted by kindred clubs and starting from club start lines are specifically excluded from Club Championship and Consistency scoring.

26.4 The score for a disqualification shall be the score for a last place finish plus 10% of the number of starters in that event with decimals being raised to the next whole number.

26.5 Should the need arise to cancel any consistency event during the season for any reason, then a reserved day may be counted as consistency events.

27. TIES

27.1 Should there be a tie on total points for two or more boats for either the Championship or Consistency Trophy, the tie shall be broken in favour of the one with the most first places and, should any such boats remain tied, the most second places and so on, if necessary, for all events which count for total points. Should the tie remain, then it shall stand as the final placing for the season.

27.2 For the purpose of this rule only, a tie for first, second, third place etc., in any one event during the season, shall count as a first, second or third place, etc., for deciding ties for the Championship and Consistency Trophies.
e.g. Two boats tied on second place will both score 2.

27.3 Ties in the Starting and Finishing Consistency Trophy shall be decided in favour of the boat with the most zeros in the consistency series and if the tie remains, then the most ones and so on for the best events for each boat. If the tie remains, then that shall be the final placing for the season.

28. SCORING PENALTIES

28.1 Penalties will be in accordance with the CPYA Rules.

28.2 In addition to 28.1, boats found to have broken Time Trialling Instructions 7.2, 16, 17, 18 and 19 shall be penalized 10 points.

29. POSTPONEMENT, CANCELLATION OR ABANDONMENT

Postponement, cancellation, or abandonment of an event shall be signaled in accordance with the CPYA Rules. All signals will be made from the Club Start Box and/or the main flagpole if not less than 1 hour prior to the event start.

30. FIXED HANDICAP SYSTEM

30.1 Initial 'day' handicaps will be assessed by the Starter and shall be based on previous performances. Generally, half of the handicap from the previous season will be carried forward with decimals being rounded up. These initial handicaps are subject to protest prior to the first event of the season.

30.2 After results are calculated, handicaps for each fleet of the day will be adjusted for the following event as follows:

(a) First Place – Increase handicap by 12 points.

(b) Second Place and Third place – Handicap to remain the same.

(c) All other boats which start and are not subsequently disqualified, shall have their handicap reduced by one point.

30.3 There shall be no maximum limit to the handicap.

30.4 Handicaps shall apply to all Club consistency events.

30.5 A boat which has not participated in a previous Time Trialling event during the previous season shall start on a handicap at the discretion of the Starter.

30.6 Handicaps shall apply to the combination of skipper, navigator and boat and may be adjusted by the Starter or Handicap Committee for any alteration to this combination, which shall not be grounds for protest.

31. VARIABLE HANDICAP SYSTEM

31.1 PREAMBLE

Variable handicaps are based on past performances of each boat in events conducted by SoPYC or by CPYA. If the boat has not previously competed in either Club or CPYA events or if records are not able to be produced when requested, then the boat may be given a maximum handicap of one (1).

In all cases, it is the aim of the Handicap Committee to establish an equitable Variable Handicap Index for each new or relatively new boat. Discretion will be applied by the Organising Committee. Variable Handicaps will be used to determine each boat's consistency results for the season, the winner being awarded the competition number 401 for the following season.

31.2 HANDICAP DEFINITIONS

The parameters for a boat's Variable Handicap will be:

- 11 events will count for each season.
- A maximum limit of 5 points will be set for the loss of points at a single mark.
- A boat's maximum Variable Handicap will not exceed 4.0.
- Adjustment of a boat's Variable Handicap will be as a percentage against that boat's Variable Handicap multiplied by the number of marks included.
- Transit checks will be used in the calculation of a result but will not be used in the re-calculation of a boat's Variable Handicap.
- A boat's Variable Handicap will be based on the best 3 of its last 10 events.

31.3 APPLICATION OF HANDICAPS

At the conclusion of an event, each boat's Handicap Rating is subtracted from actual points lost for the day to give the handicap result. Thus, a net score of 0 would indicate that a boat had achieved its "average" result for the event, with a minus score indicating better than average and a positive score reflecting a lower-than-average score.

32. RESULTS

Results will be announced in the Clubhouse as soon as practicable after the event. Result sheets will be displayed in the Clubrooms and on the Sportspage website after the announcement of results.

33. PROTESTS AND REQUESTS FOR REDRESS

Procedure for protests will be in accordance with the CPYA Rules. An extension of the time limit may be granted in special circumstances by the Organising Committee.

Any request for redress shall be made within 30 minutes of the posting of results.

34. PENNANTS AND TROPHIES

- 34.1 Pennants will be awarded on the day of each event to skippers and navigators who:
- (a) achieve first, second or third places in each fleet on fixed handicap and;
 - (b) score least actual points lost over the combined fleet.
- 34.2 Boat Plaques will be distributed on the Power Yacht Section Prize Night to those who have achieved a first place in each fleet of each event on fixed handicap.
- 34.3 Places will be decided on the outright result in non-consistency events, unless otherwise specified.

35. SPECIAL TROPHIES

- 35.1 Special Trophies as set out in Appendix 2 will be awarded on the day of the event as shown in the program for the season.
- 35.2 The Zero Points Lost Trophy will be awarded on the day of the event to Skipper(s) and Navigator(s) who achieve zero actual points for the course in any consistency event which has a minimum of seven (7) checkpoints.

36. SEASON TROPHIES

- 36.1 Season trophies as set out in appendix 2 will be awarded on SoPYC Power Yacht Section Prize Night. Each of these trophies will be decided on the outright score for each competitor over the best 11 of the consistency events (as set out in Appendix 1) with the lowest score being the winner. They will be decided over the season with all boats scored as one fleet. The basis of determination shall be: -
- (a) *Champion Boat Trophy (Club Champion - 400)*
Points will be awarded for placings in each event (i.e. excluding handicap), as described in Time Trial instruction 26.
 - (b) *Annual Competition Trophy (Consistency - 401)*
Points will be awarded for placings in each event using Variable Handicap System as described in time trial instruction 31. The winner of the Champion Boat (Club Champion) Trophy is ineligible to win this trophy.
 - (c) *Starting and Finishing Consistency Trophy - Actual points lost at the start and finish line for each event.*
 - (d) *The 'Gretton' Best First Year Time Trialler Trophy* is awarded to the best Time Trialler in their first competitive year. In the event that no nominee for Best First Year Skipper award has completed the required number of events for the season, the selection shall be made by the Power Yacht Chairperson and the Starter. At their sole discretion, they may decide not to make an award.
- 36.2 Season trophies as set out in Appendix 2 will be awarded on SoPYC Power Yacht Section Prize Night. Each of these trophies will be decided on the criteria set out below:

- (a) *Most Improved Trophy* - Most improved skipper over the season as assessed by the Starter.
- (b) *Maevana Trophy* – Most points lost in any one event.
- (c) *Consistent Competitor* - Consistent competitor plaques awarded to the lowest scoring competitor who competed in 11 or more of the consistency events but who did not achieve a first place on handicap or any other trophy throughout the season. In the event that no nominee for the Consistent Competitor award has completed the required number of events for the season, the selection shall be made by the Power Yacht Chairperson and the Starter. At their sole discretion, they may decide not to make an award.

Attachment 1

Schedule of Events

Codes: **I – Invitational Event** **C – Consistency**
 S – State Heat (CPYA) **N - Non-Consistency**

Code	Day	Date	Event	Suggested Trophy	Course	Time
	Sun	21/04/2024	SoPYC Training Session			0930
I-N	Sat	4/05/2024	Opening Day – Season Launch & Live Entertainment	Commodore's	401	1515
C	Sat	11/05/2024		Sherwell Family	402	1400
C	Sat	18/05/2024		Rob.E Blanckensee	403	1400
I-C-S	Sat	25/05/2024	State Heat 1 (SoPYC) & Sundowner with Live Entertainment	TiTu Trophy	412	1400
	Sat	1/06/2024	WA Day Long weekend	<i>Reserve day</i>	404	1400
C	Sat	8/06/2024		Colin Wilson	405	1400
S-N	Sun	9/06/2024	State Heat 2: Lloyd Anderson (CYC)		305	
C	Sat	15/06/2024		Cliff Spence	406	1400
S-N	Sat	22/06/2024	State Heat 3: Seafarer (RPYC)		122	
N	Sat	29/06/2024		Navigator Skipper	407	1400
C	Sat	6/07/2024		Dalglish Family	409	1400
C-S	Sat	13/07/2024	State Heat 4 (RFBYC)		2	1400
C	Sat	20/07/2024		Ray D Carter	410	1400
C-S	Sat	27/07/2024	State Heat 5 (SoPYC)	Pelican Trophy	3	1400
	Sat	3/08/2024	Commodores Ball	<i>Reserve day</i>	413	1000
	Sun	4/08/2024	Cork Evans (PFSYC)		See Event	
C-S	Sat	10/08/2024	State Heat 6 (RPYC)		4	1400
I-N	Sat	17/08/2024	Time Trial & Sundowner & Live Entertainment	Lady Skippers	414	1400
C	Sat	24/08/2024		Capital Cup	415	1400
S-N	Sun	25/08/2024	State Heat 7: Kylie Cup (RFBYC)		221	900
C	Sat	31/08/2024		Graeme Hood	416	1400
C-S	Sat	7/09/2024	State Heat 8 (CYC)		5	1400
C	Sat	14/09/2024		SMS Trophy	417	1400
C	Sat	21/09/2024	Closing Day	Patrons Trophy	419	1400
	Fri	4/10/2024	CPYA Prize Night (RFBYC)			
	Sat	12/10/2024	SoPYC Prize Night			
	Sat	30/11/2024	Jetty 6 Christmas Party			
I-N	Fri	7/03/2025	Xantippe Night Time-Trial	Xantippe	421	1830

Only SoPYC course maps are provided as part of the document/booklet at the end.
For all CPYA and kindred club course please head to the relevant event pages and uploads supplied by them.

Invitation Events – Kindred Clubs

Club	Date	Event	Start
CYC	9/06/2024	Lloyd Anderson	0900
RPYC	22/06/2024	Seafarers Trophy	1300
PFSYC	4/08/2024	Cork Evans	0900
RFBYC	25/08/2024	Kylie Cup	0900
RFBYC	14/02/2025	Twilight	1800
PFYC	19/04/25	Rob Brown	1800

**Some of these events form part of the CPYA State Heats as per the 'Schedule of Events'*

Opening Day – Kindred Clubs

Date	Club	Course	Start
27/04/2024	Royal Perth Yacht Club	Sailpass	1200
4/05/2024	Royal Freshwater Bay Yacht Club	201	1500
11/05/2024	Claremont Yacht Club	302	1430

Season Trophies

Reads Print Trophy

Champion Boat (Club Champion – 400)

J.A. George Memorial Trophy

Annual Competition

(Outright Consistency – 401)

Aub Berryman Memorial Trophy

Starting and Finishing Consistency

David Burton Perpetual Trophy

Most Improved Boat

Maevana Trophy

Most Points Lost

Imprint Plastic Award

Consistent Competitor

The 'Greton' Trophy

Best First Year Time Trialler

Trophies

Outright Trophies

Commodore's Trophy
Opening Day
Commodore

Ti Tu Trophy
Frank Marchant

Seafarer's Measure
Navigator Skippers
Alan & Molly Coy

Ray D. Carter Memorial Trophy
Marlene Carter

SoPYC Ladies Luncheon Group
Trophy
Ladies' Luncheon Chairperson

Colin Wilson Trophy
Megan Berry

Xantippe Perpetual Trophy
David Moroni or Nominee

Bryan (BC) Carter
Zero Points Lost Trophy
Bryan Carter

Handicap Trophies

The Sherwell Memorial Trophy
Sherwell Family Member

Robert E. Blanckensee Memorial
Trophy
Ian Blanckensee

Pelican Perpetual Trophy
Pelican Section Representative

Dalglish Family Trophy
PC Frank Dalglish

Cliff Spence Memorial Trophy
John & Pauline Spence

Patron's Perpetual Trophy
PC Colin Cowden

Capital Cup
Ray Gullotto

Graeme Hood Memorial Trophy
Julie Hood

Specialised Marine Services
Trophy
Carl Segreto

Attachment 3: Competitors Event Sheets

Results Log Sheet
Consistency/Championship Events

DATE	POINTS LOST	HANDICAP	ADJUSTED POINTS	PLACE	CONS. POINTS	CHAMP POINTS
May 11 th						
May 18 th						
May 25 th						
* June 1 st						
June 8 th						
June 15 th						
July 6 th						
July 13 th						
July 20 th						
July 27 th						
* Aug 3 rd						
Aug 10 th						
Aug 24 th						
Aug 31 st						
Sept 7 th						
Sept 14 th						
Sept 21 st						

*Denotes Possible Reserve Event Day

Results Log Sheet: Non-Consistency Events

DATE	EVENT	POINTS LOST	HANDICAP	ADJUSTED POINTS	PLACE
May 4 th	Opening Day				
June 29 th	Nav / Skipper				
Aug 17 th	Lady Skippers				
Mar 7 th '25	Xantippe				
TBA	Yimbala				

SoPYC State Team Results

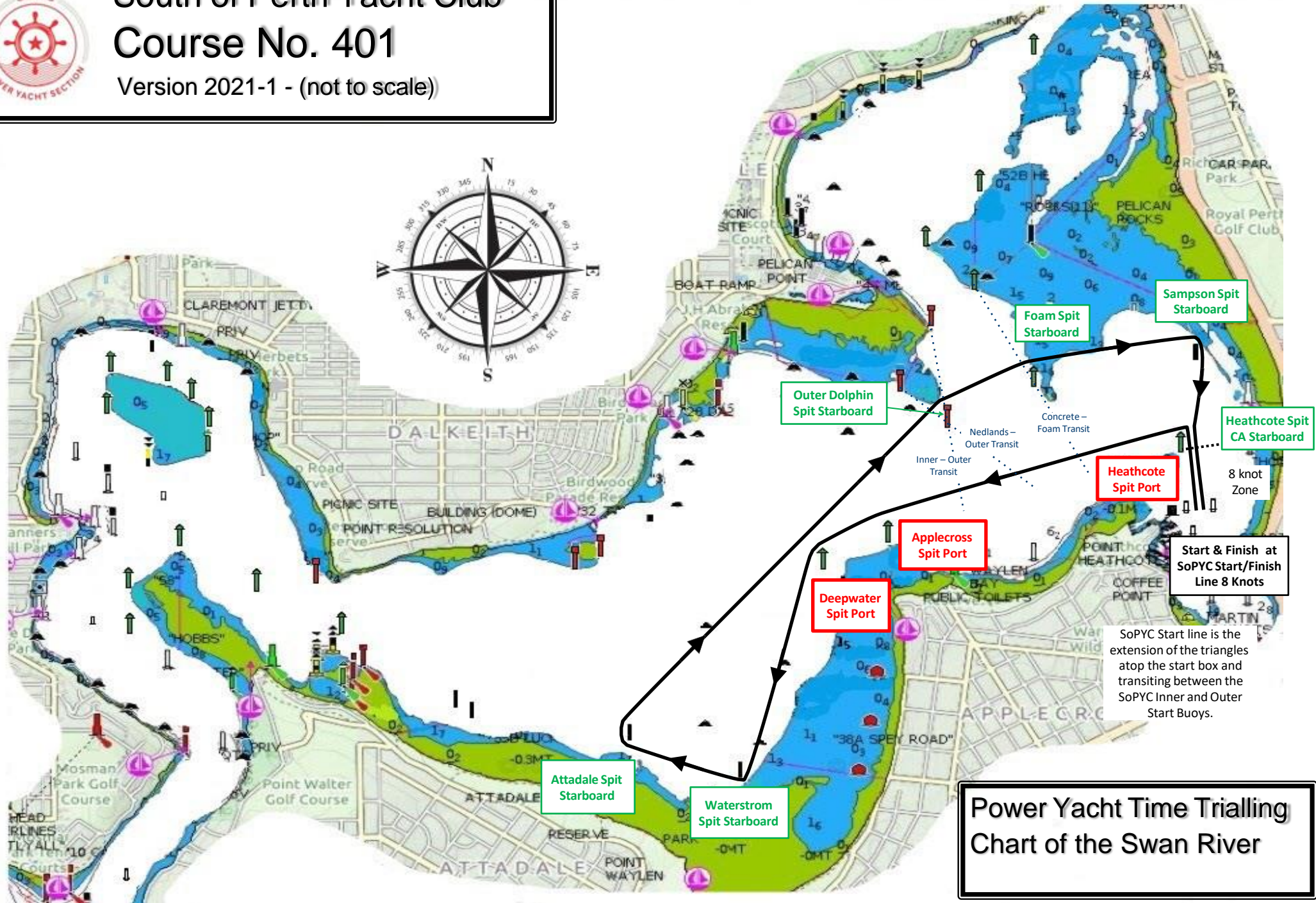
EVENT	POINTS EVENT	POSITION EVENTS	POINTS CUMULATIVE	POSITION OVERALL
1 – May 25 th				
2 – June 9 th				
3 – June 22 nd				
4 – July 13 th				
5 – July 27 th				
6 – Aug 10 th				
7 – Aug 25 th				
8 – Sept 7 th				

State Championship Results

EVENT	POINTS LOST	POSITION EVENT	ADJUSTED POINTS	PLACE
1 – May 25 th				
2 – June 9 th				
3 – June 22 nd				
4 – July 13 th				
5 – July 27 th				
6 – Aug 10 th				
7 – Aug 25 th				
8 – Sept 7 th				



South of Perth Yacht Club Course No. 401 Version 2021-1 - (not to scale)

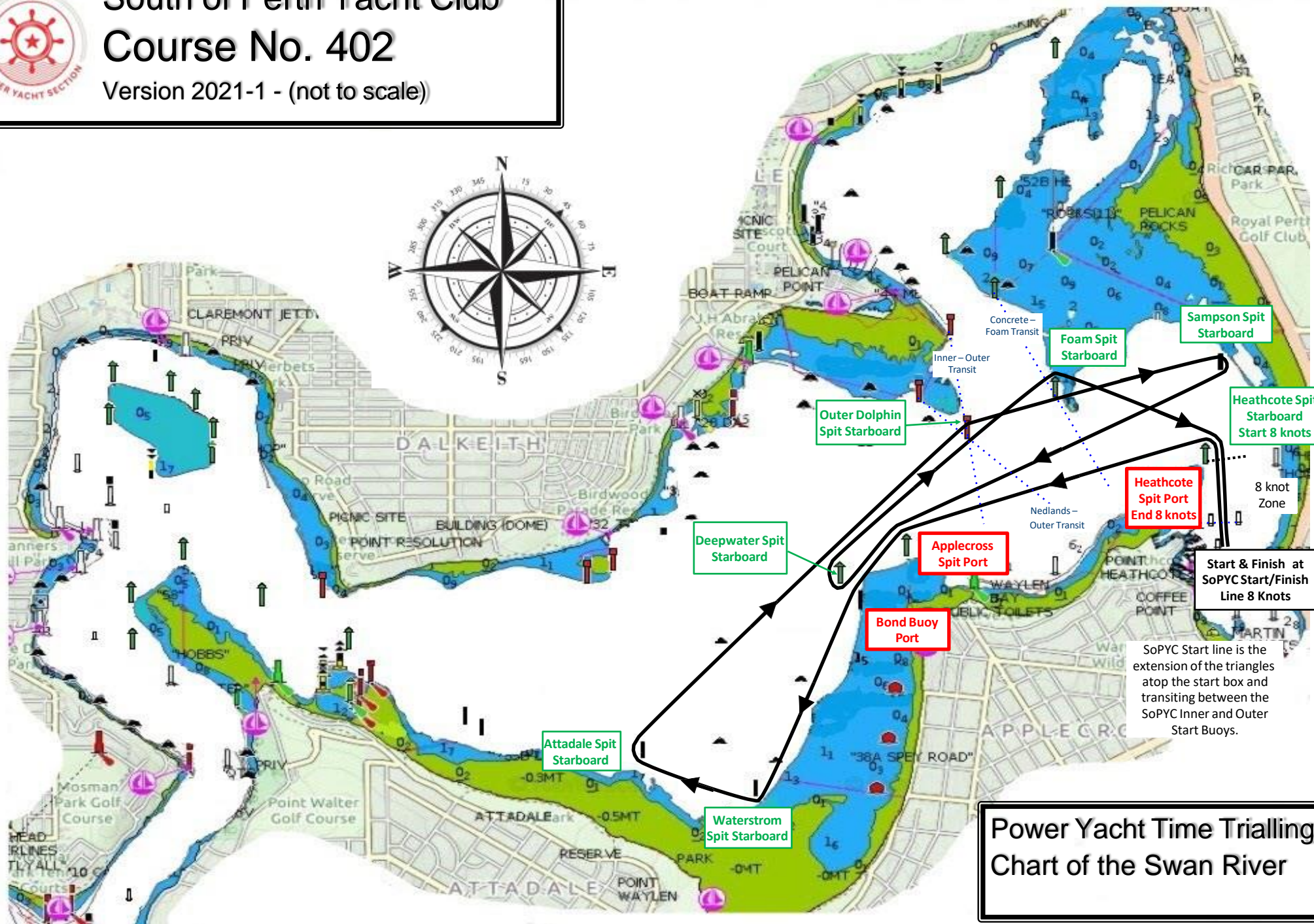


**Power Yacht Time Trialling
Chart of the Swan River**



South of Perth Yacht Club Course No. 402

Version 2021-1 - (not to scale)

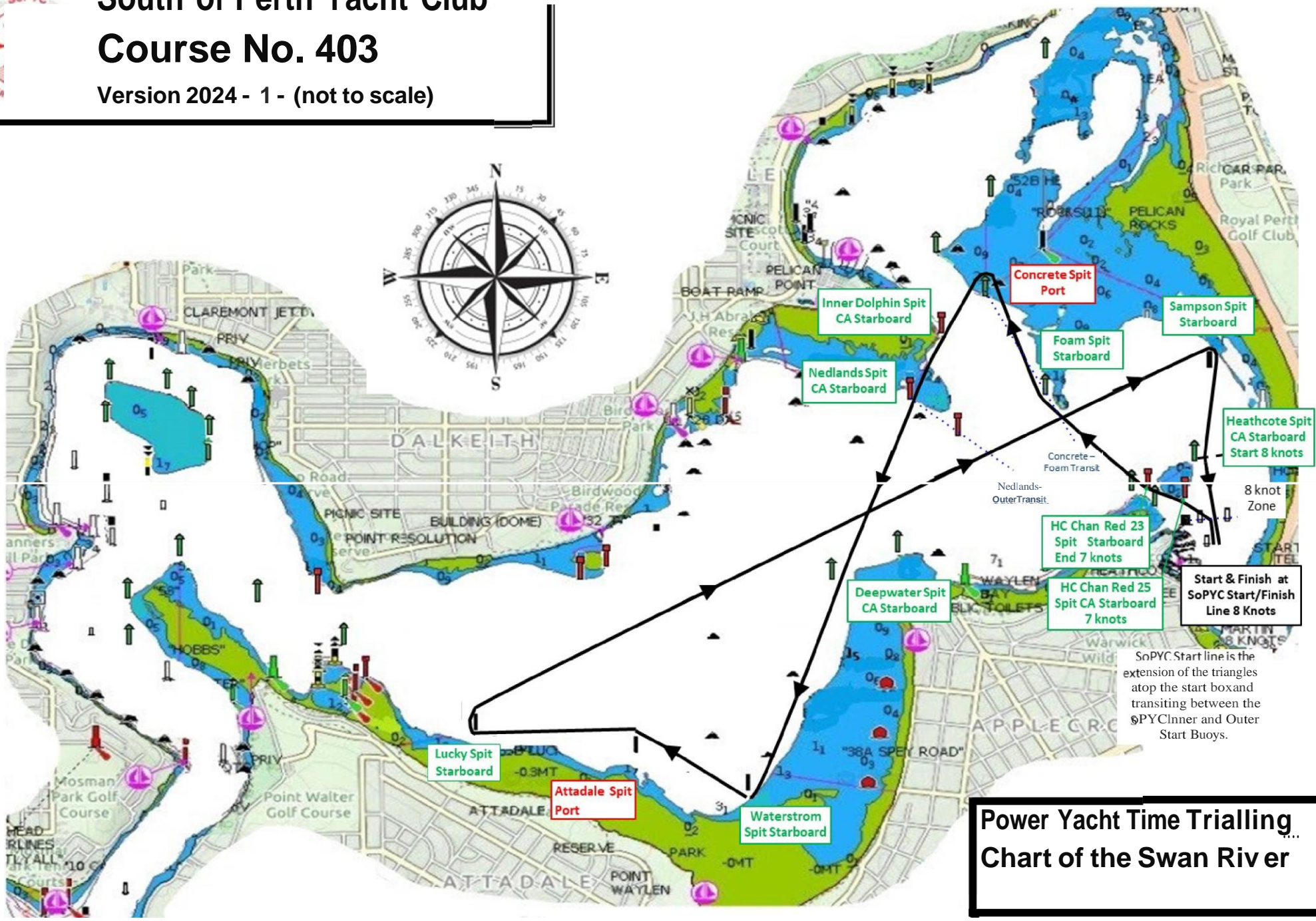


**Power Yacht Time Trialling
Chart of the Swan River**



South of Perth Yacht Club Course No. 403

Version 2024 - 1 - (not to scale)



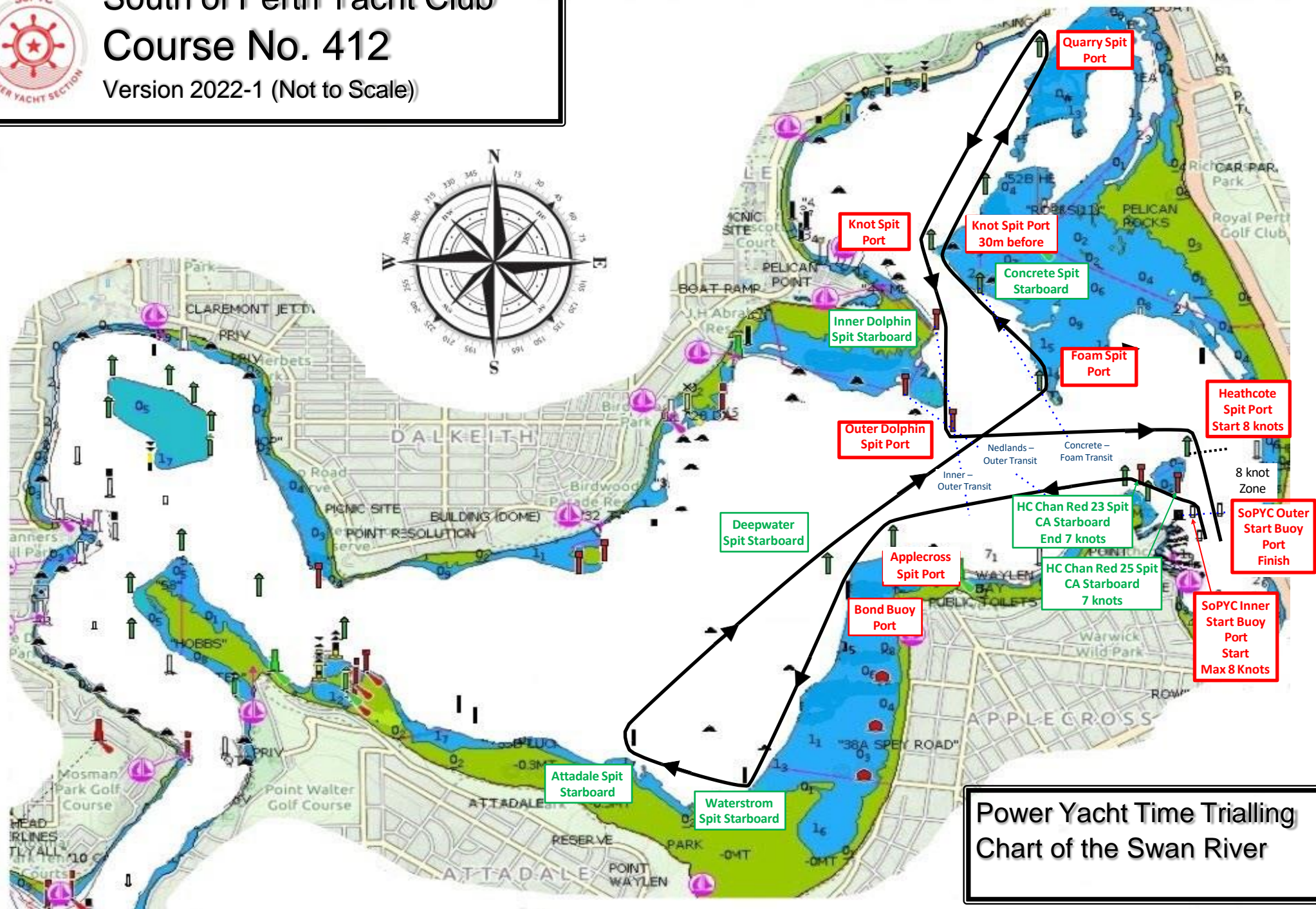
**Power Yacht Time Trialling
Chart of the Swan River**

SoPYC Start line is the extension of the triangles atop the start box and transiting between the SoPYC Inner and Outer Start Buoys.

- Concrete Spit Port
- Inner Dolphin Spit CA Starboard
- Nedlands Spit CA Starboard
- Foam Spit Starboard
- Sampson Spit Starboard
- Heathcote Spit CA Starboard Start 8 knots
- 8 knot Zone
- HC Chan Red 23 Spit Starboard End 7 knots
- HC Chan Red 25 Spit CA Starboard 7 knots
- Start & Finish Line 8 Knots
- Deepwater Spit CA Starboard
- Waterstrom Spit Starboard
- Attadale Spit Port
- Lucky Spit Starboard



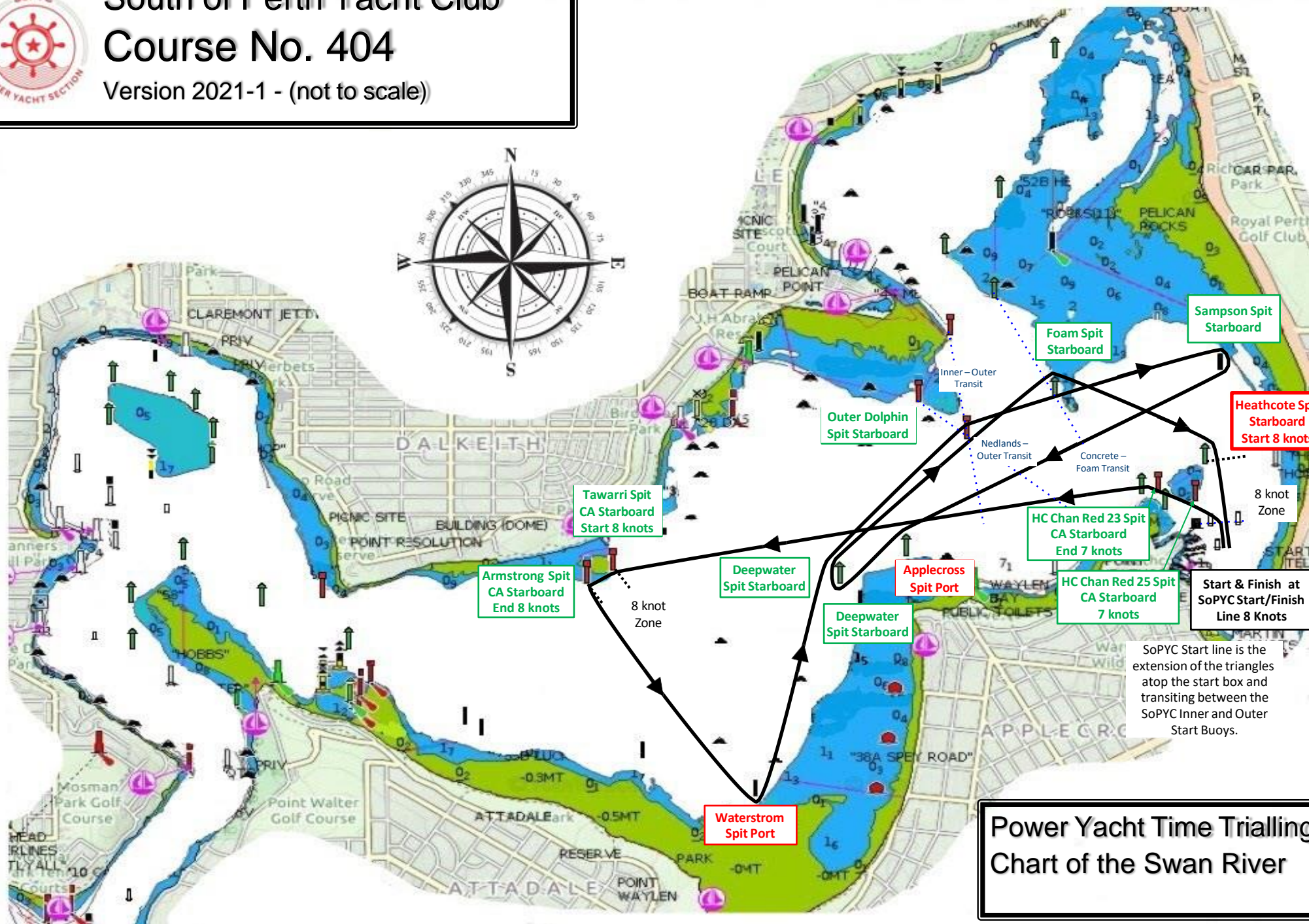
South of Perth Yacht Club Course No. 412 Version 2022-1 (Not to Scale)



Power Yacht Time Trialling
Chart of the Swan River



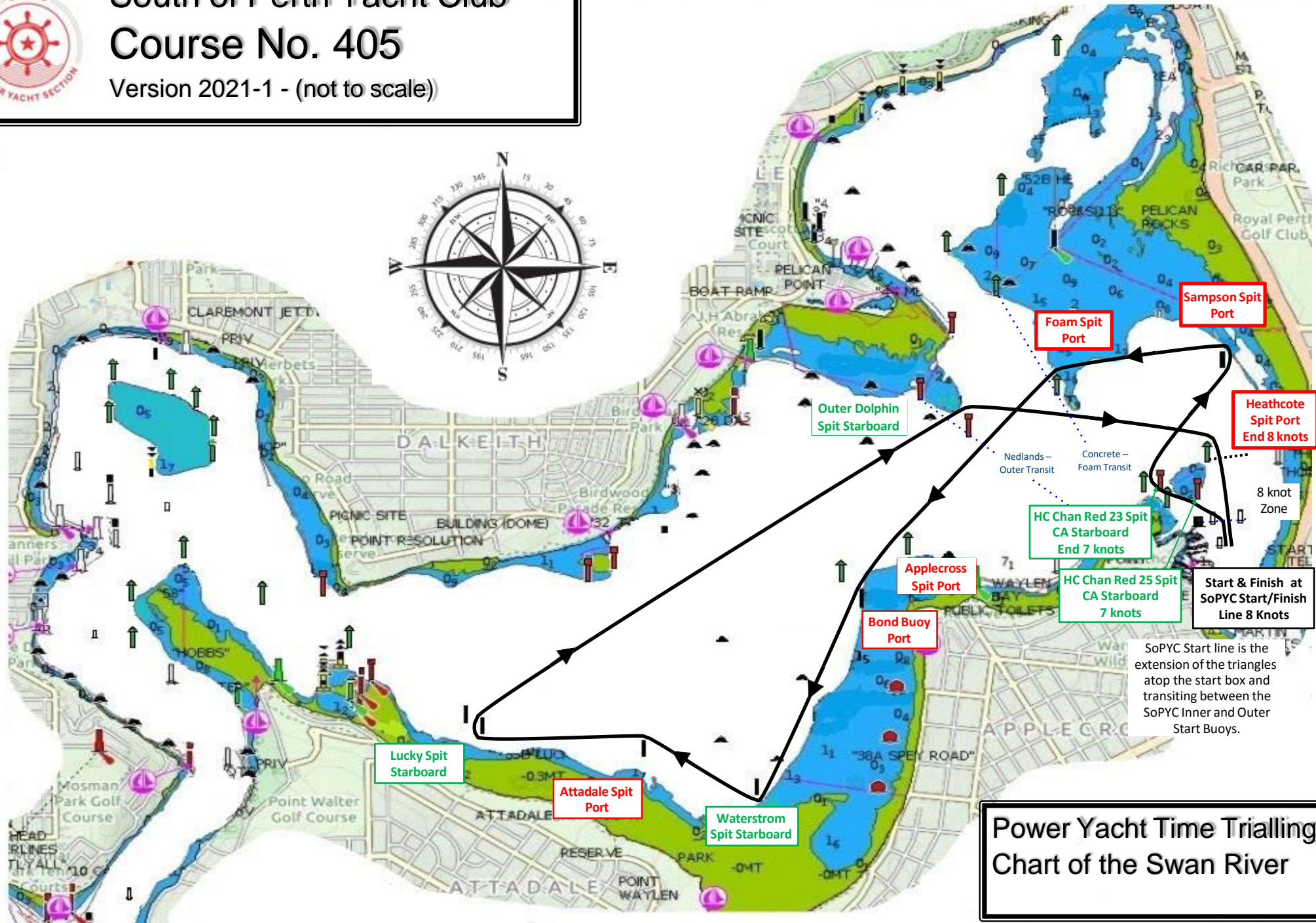
South of Perth Yacht Club Course No. 404 Version 2021-1 - (not to scale)



**Power Yacht Time Trialling
Chart of the Swan River**



South of Perth Yacht Club Course No. 405 Version 2021-1 - (not to scale)

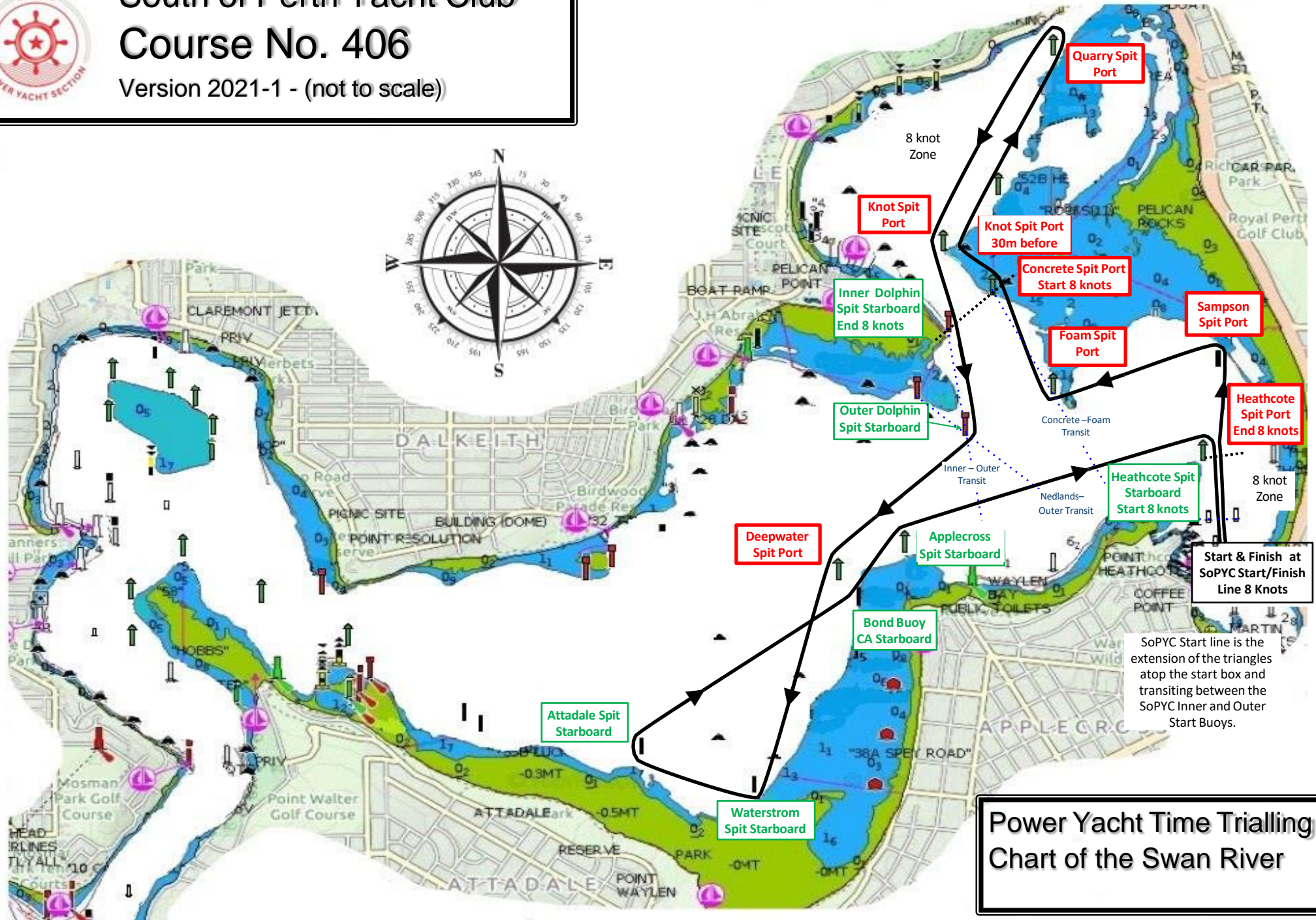


SoPYC Start line is the extension of the triangles atop the start box and transiting between the SoPYC Inner and Outer Start Buoys.

**Power Yacht Time Trialling
Chart of the Swan River**



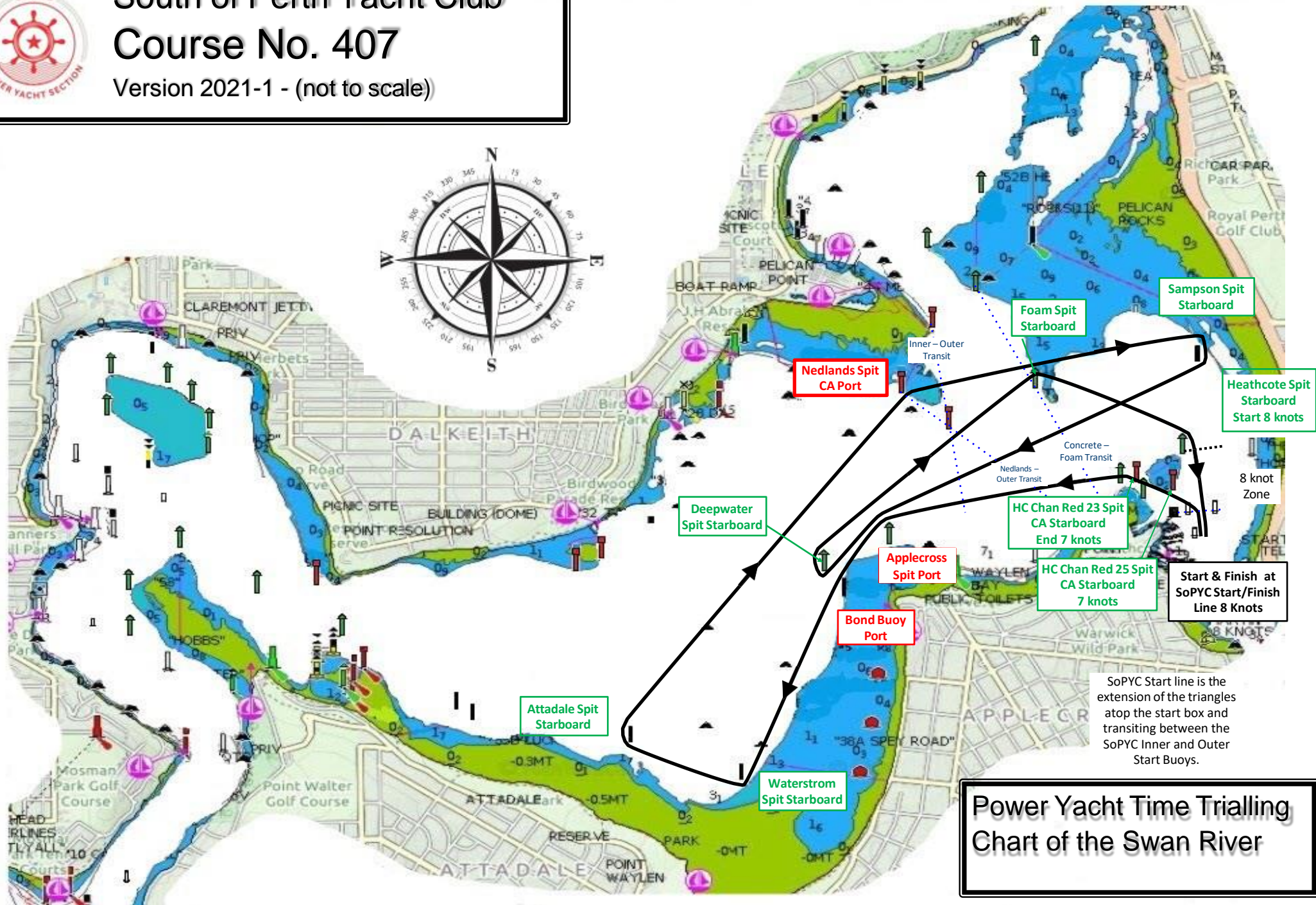
South of Perth Yacht Club Course No. 406 Version 2021-1 - (not to scale)



Power Yacht Time Trialling
Chart of the Swan River



South of Perth Yacht Club Course No. 407 Version 2021-1 - (not to scale)

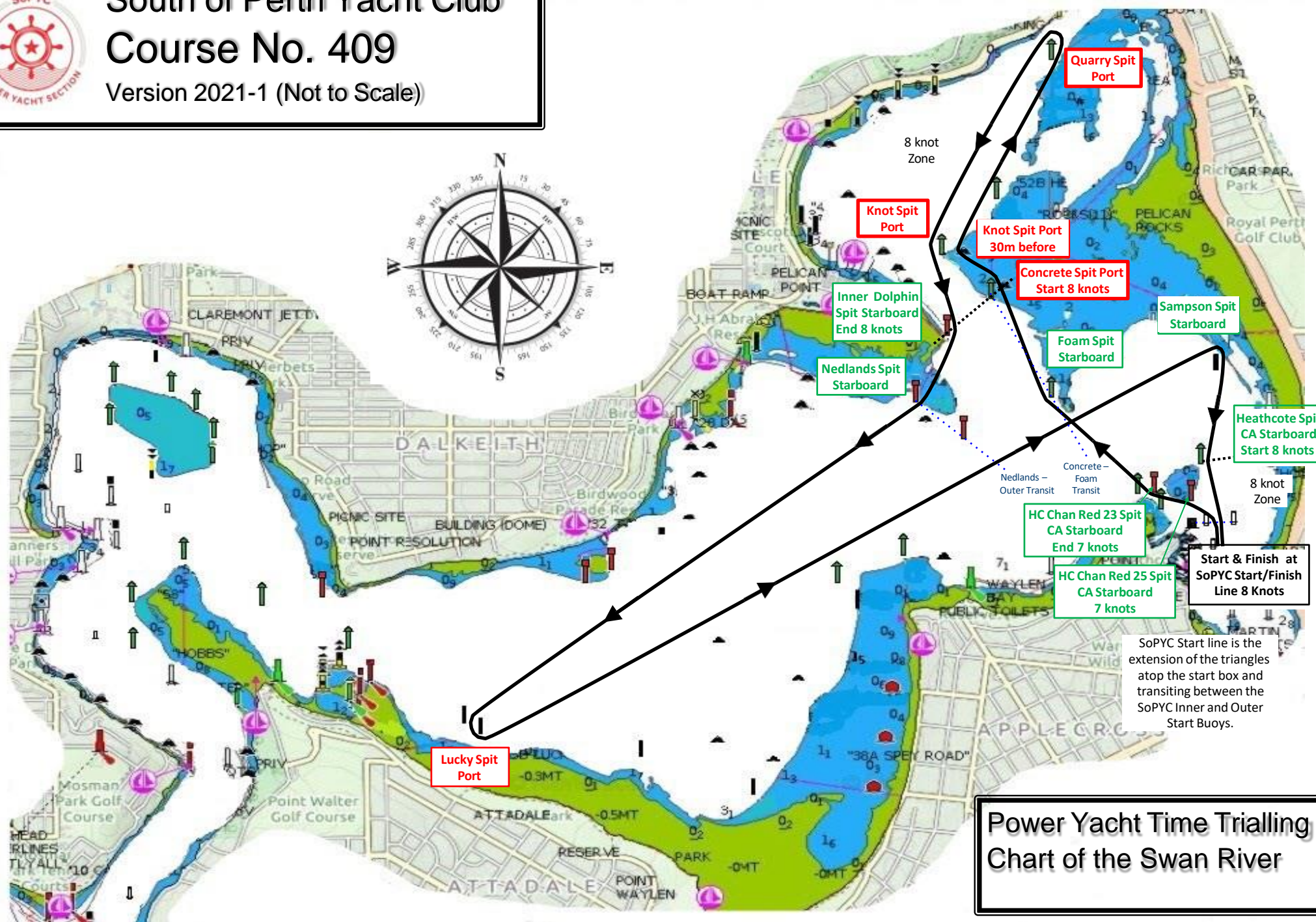


SoPYC Start line is the extension of the triangles atop the start box and transiting between the SoPYC Inner and Outer Start Buoys.

**Power Yacht Time Trialling
Chart of the Swan River**



South of Perth Yacht Club Course No. 409 Version 2021-1 (Not to Scale)



Power Yacht Time Trialling
Chart of the Swan River

SoPYC Start line is the extension of the triangles atop the start box and transiting between the SoPYC Inner and Outer Start Buoys.

Start & Finish at SoPYC Start/Finish Line 8 Knots

HC Chan Red 23 Spit CA Starboard End 7 knots

HC Chan Red 25 Spit CA Starboard 7 knots

Heathcote Spit CA Starboard Start 8 knots

Sampson Spit Starboard

Concrete Spit Port Start 8 knots

Knot Spit Port 30m before

Knot Spit Port

Inner Dolphin Spit Starboard End 8 knots

Nedlands Spit Starboard

Foam Spit Starboard

Lucky Spit Port

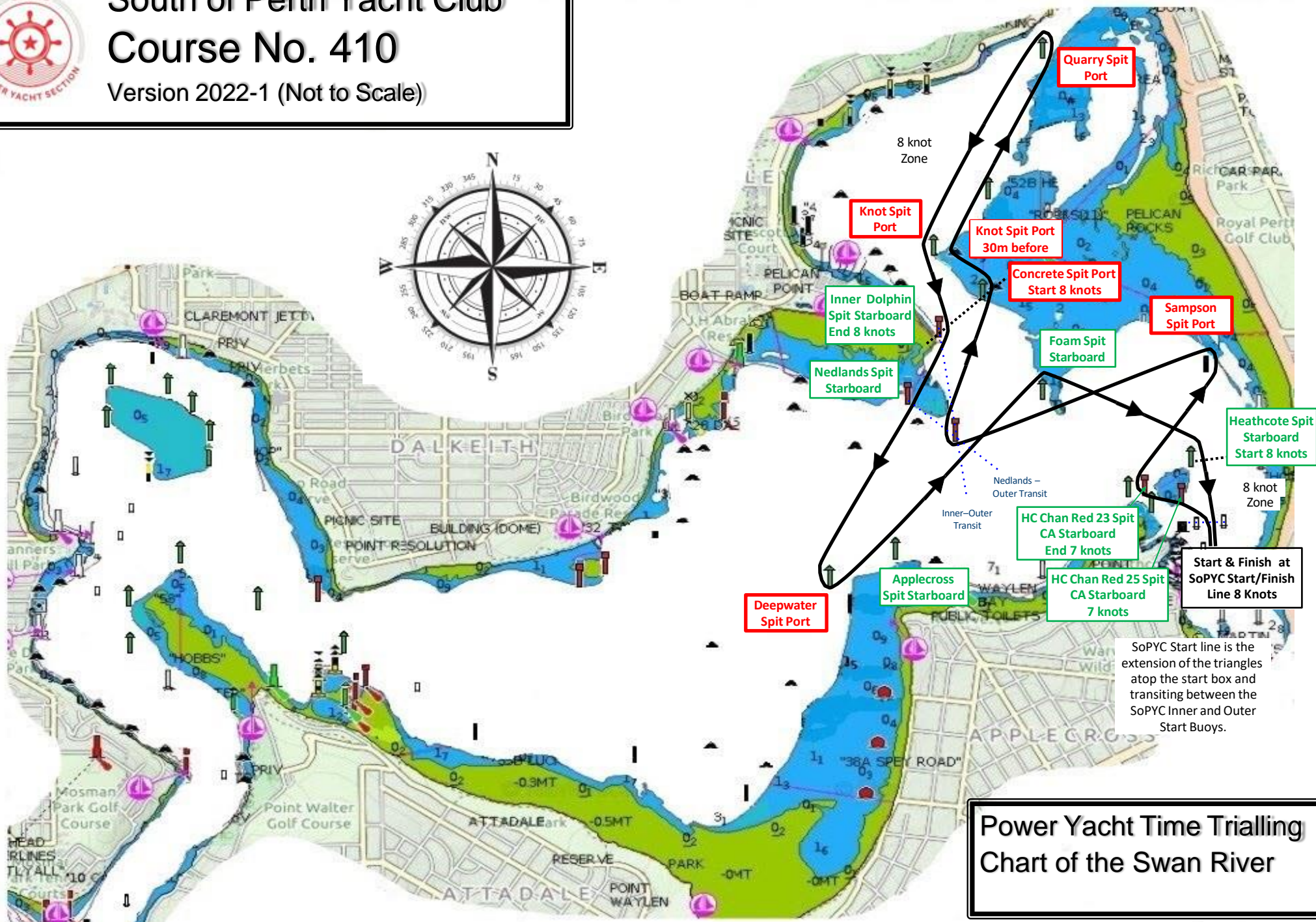
8 knot Zone

8 knot Zone



South of Perth Yacht Club Course No. 410

Version 2022-1 (Not to Scale)

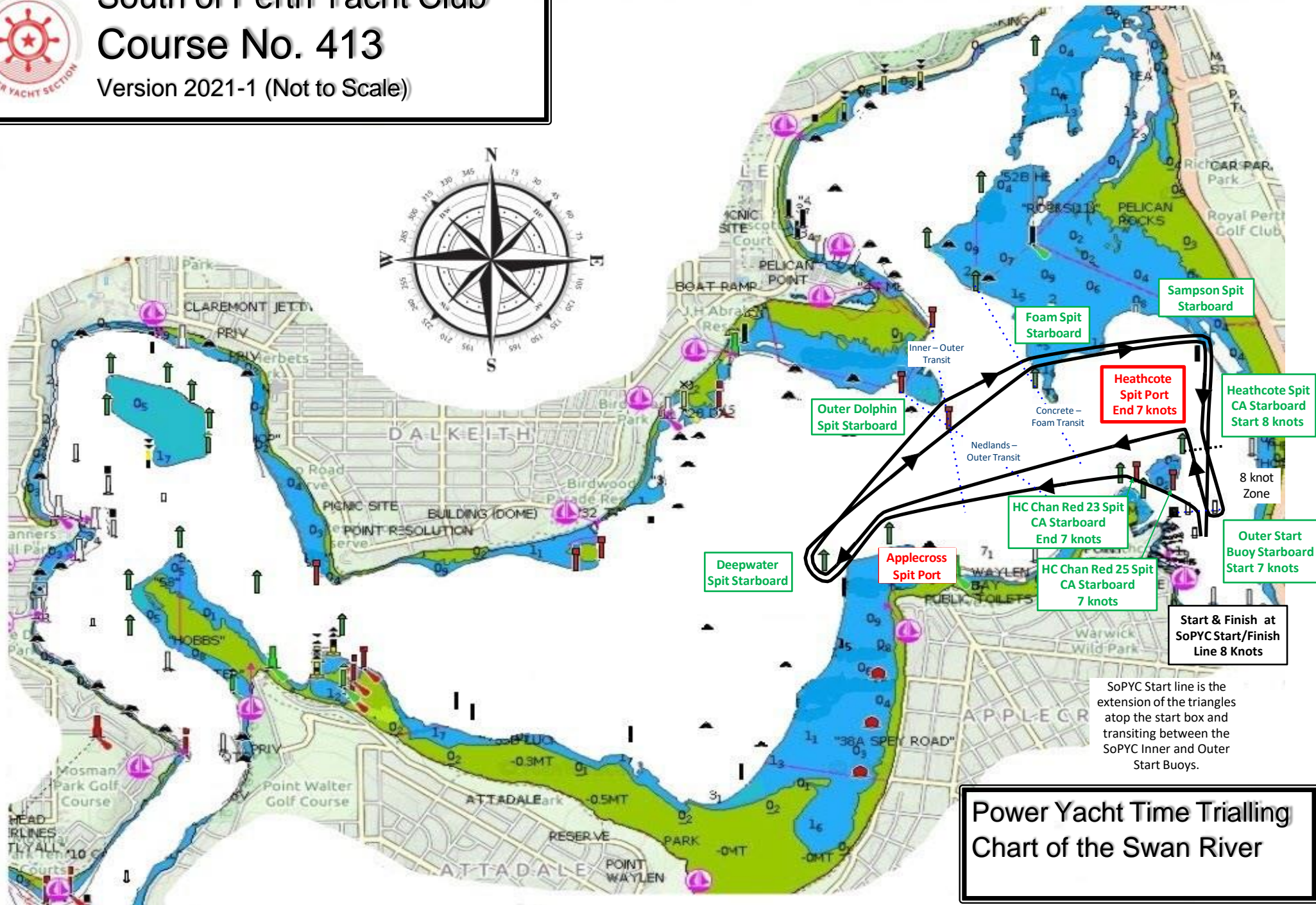


**Power Yacht Time Trialling
Chart of the Swan River**



South of Perth Yacht Club Course No. 413

Version 2021-1 (Not to Scale)

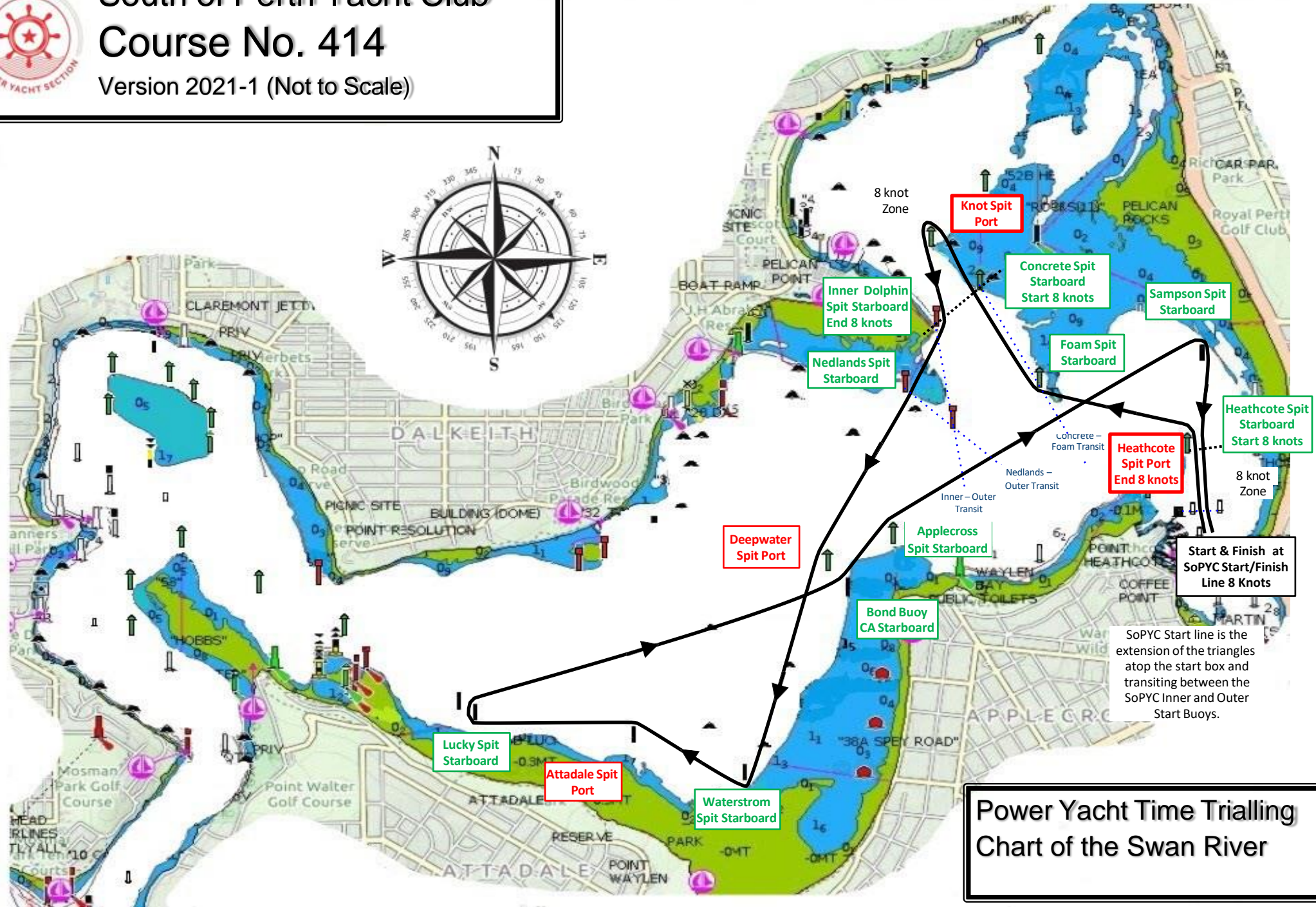


**Power Yacht Time Trialling
Chart of the Swan River**



South of Perth Yacht Club Course No. 414

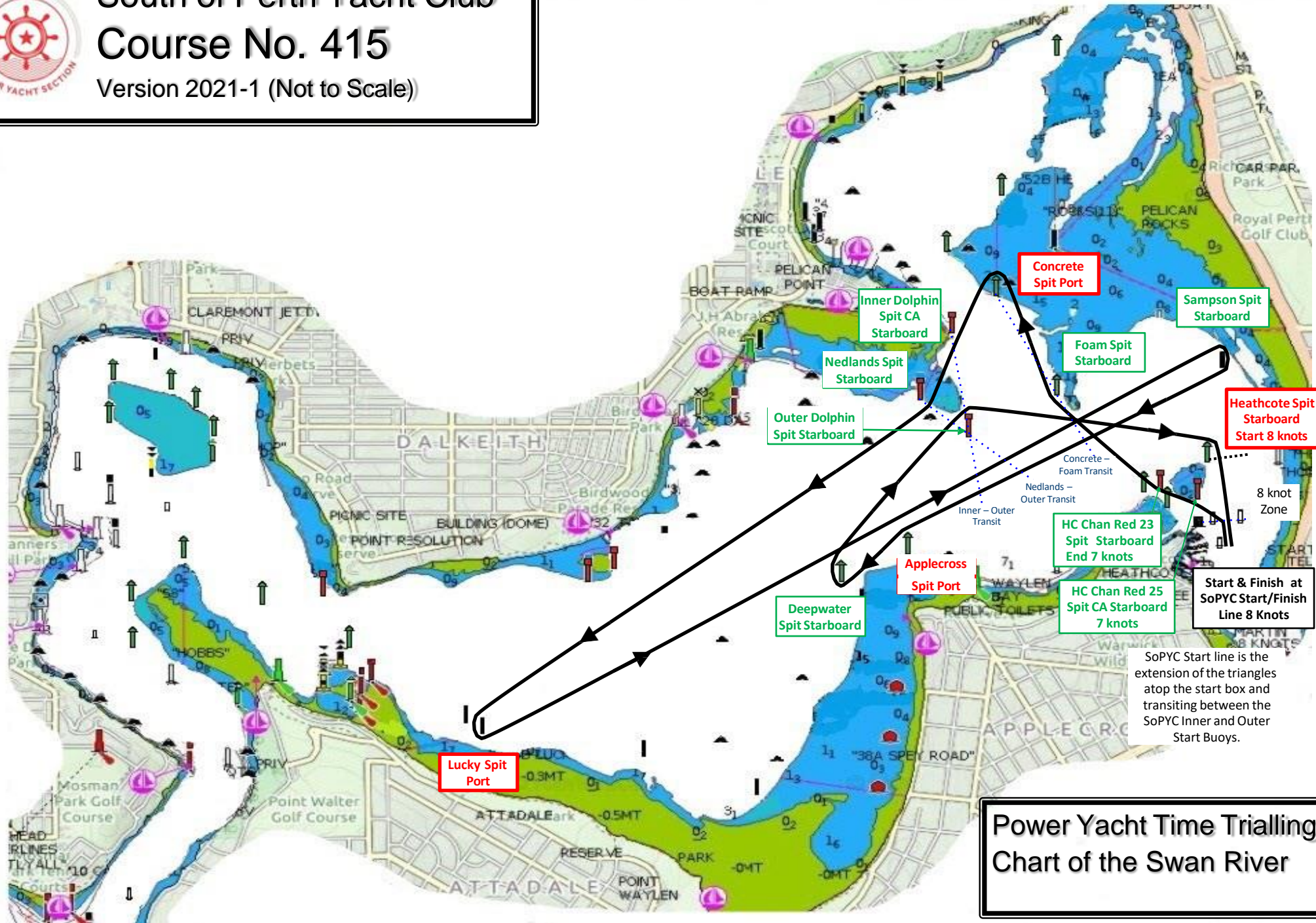
Version 2021-1 (Not to Scale)



**Power Yacht Time Trialling
Chart of the Swan River**



South of Perth Yacht Club Course No. 415 Version 2021-1 (Not to Scale)



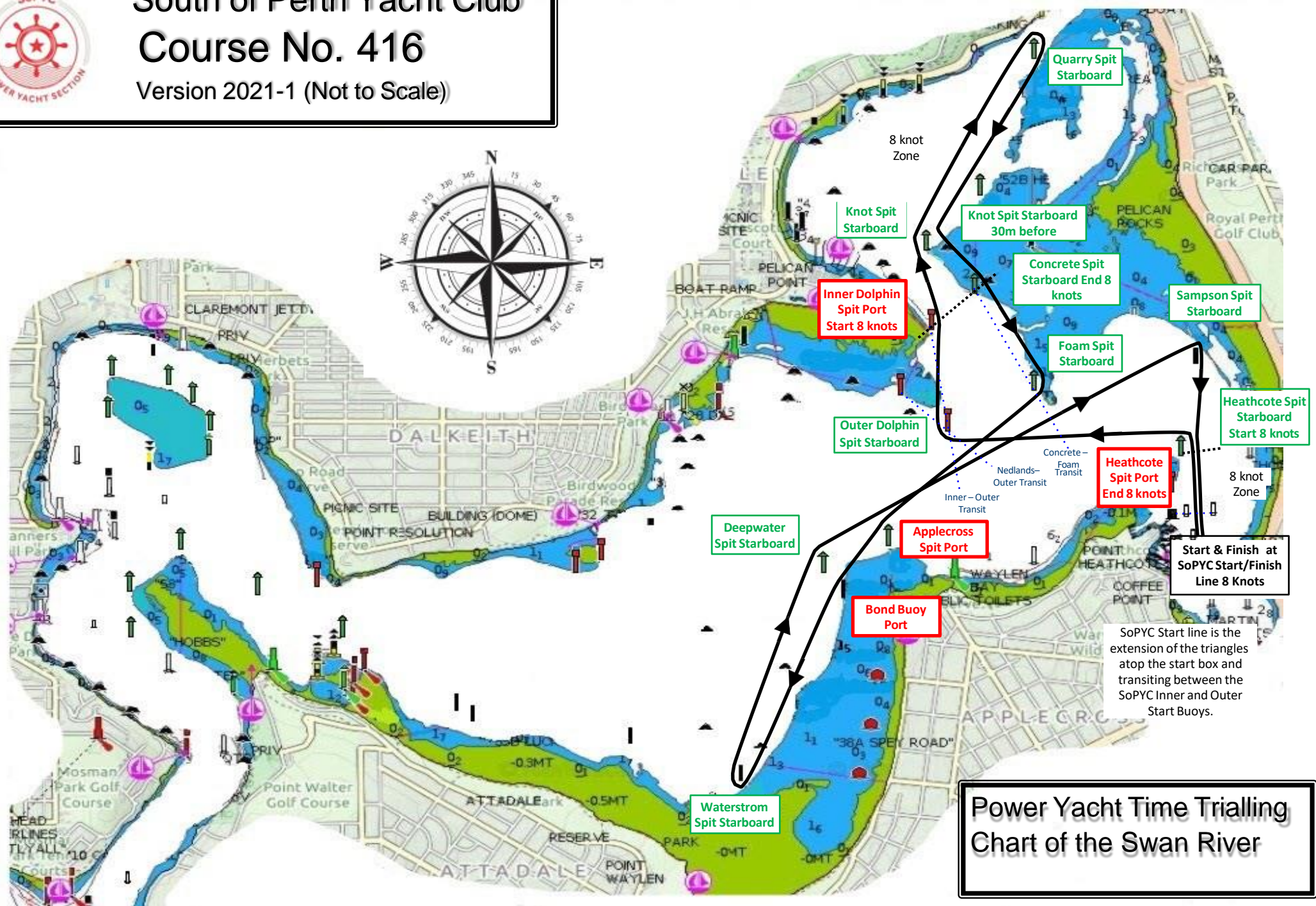
**Power Yacht Time Trialling
Chart of the Swan River**



South of Perth Yacht Club

Course No. 416

Version 2021-1 (Not to Scale)

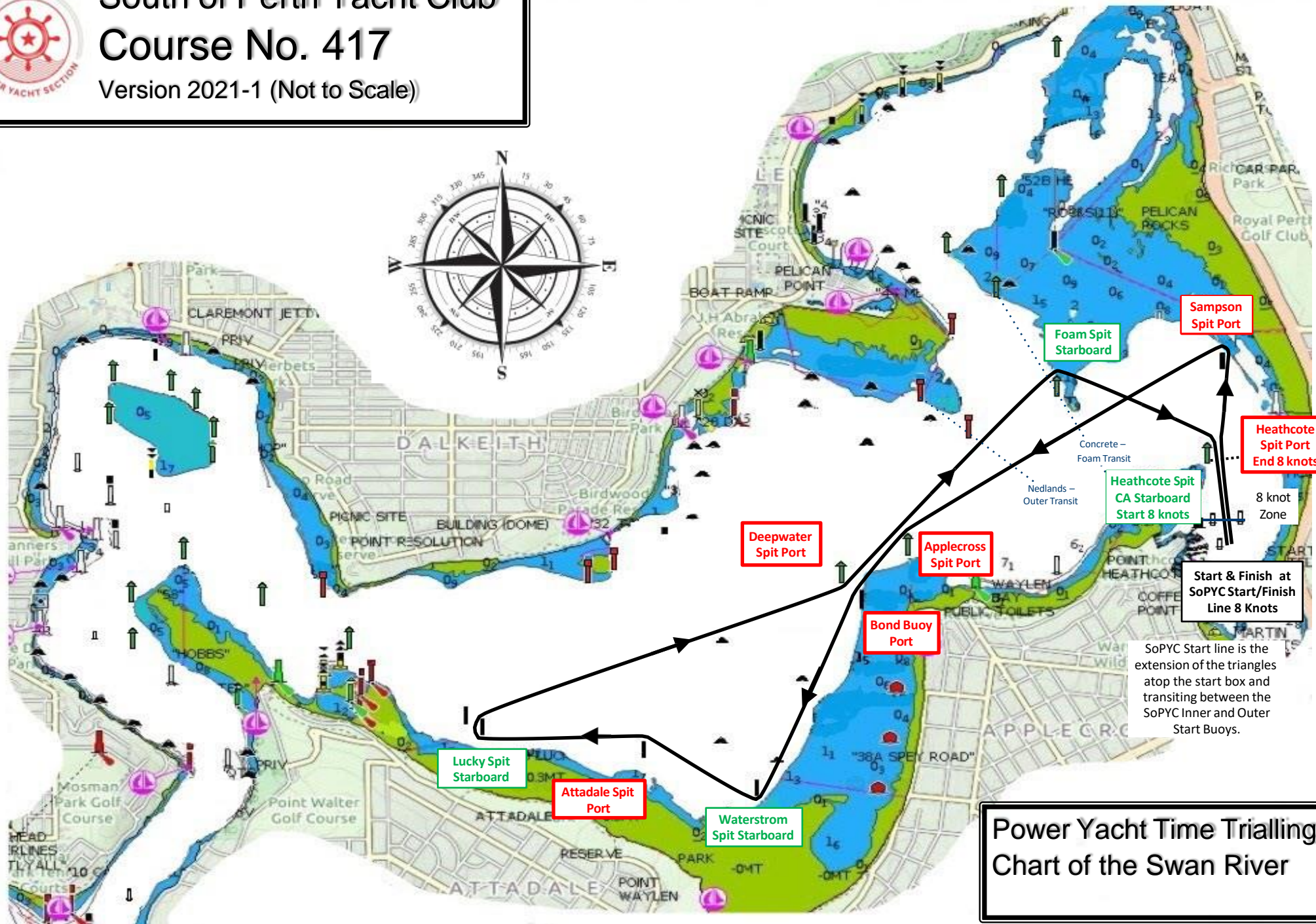


SoPYC Start line is the extension of the triangles atop the start box and transiting between the SoPYC Inner and Outer Start Buoys.

Power Yacht Time Trialling Chart of the Swan River



South of Perth Yacht Club Course No. 417 Version 2021-1 (Not to Scale)



Sampson Spit Port

Foam Spit Starboard

Heathcote Spit Port End 8 knots

Heathcote Spit CA Starboard Start 8 knots

8 knot Zone

Deepwater Spit Port

Applecross Spit Port

Bond Buoy Port

Start & Finish at SoPYC Start/Finish Line 8 Knots

SoPYC Start line is the extension of the triangles atop the start box and transiting between the SoPYC Inner and Outer Start Buoys.

Lucky Spit Starboard

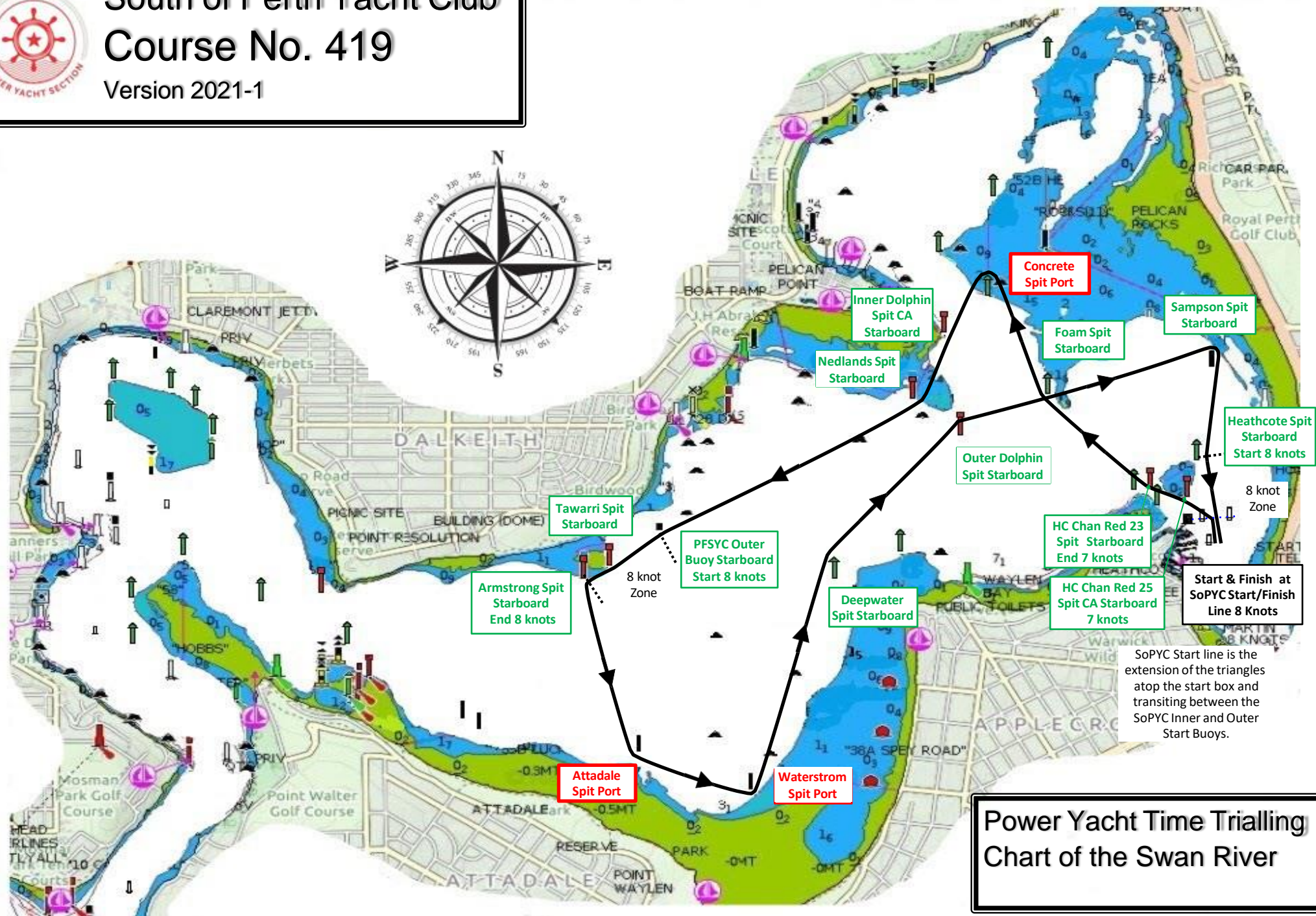
Attadale Spit Port

Waterstrom Spit Starboard

**Power Yacht Time Trialling
Chart of the Swan River**



South of Perth Yacht Club Course No. 419 Version 2021-1

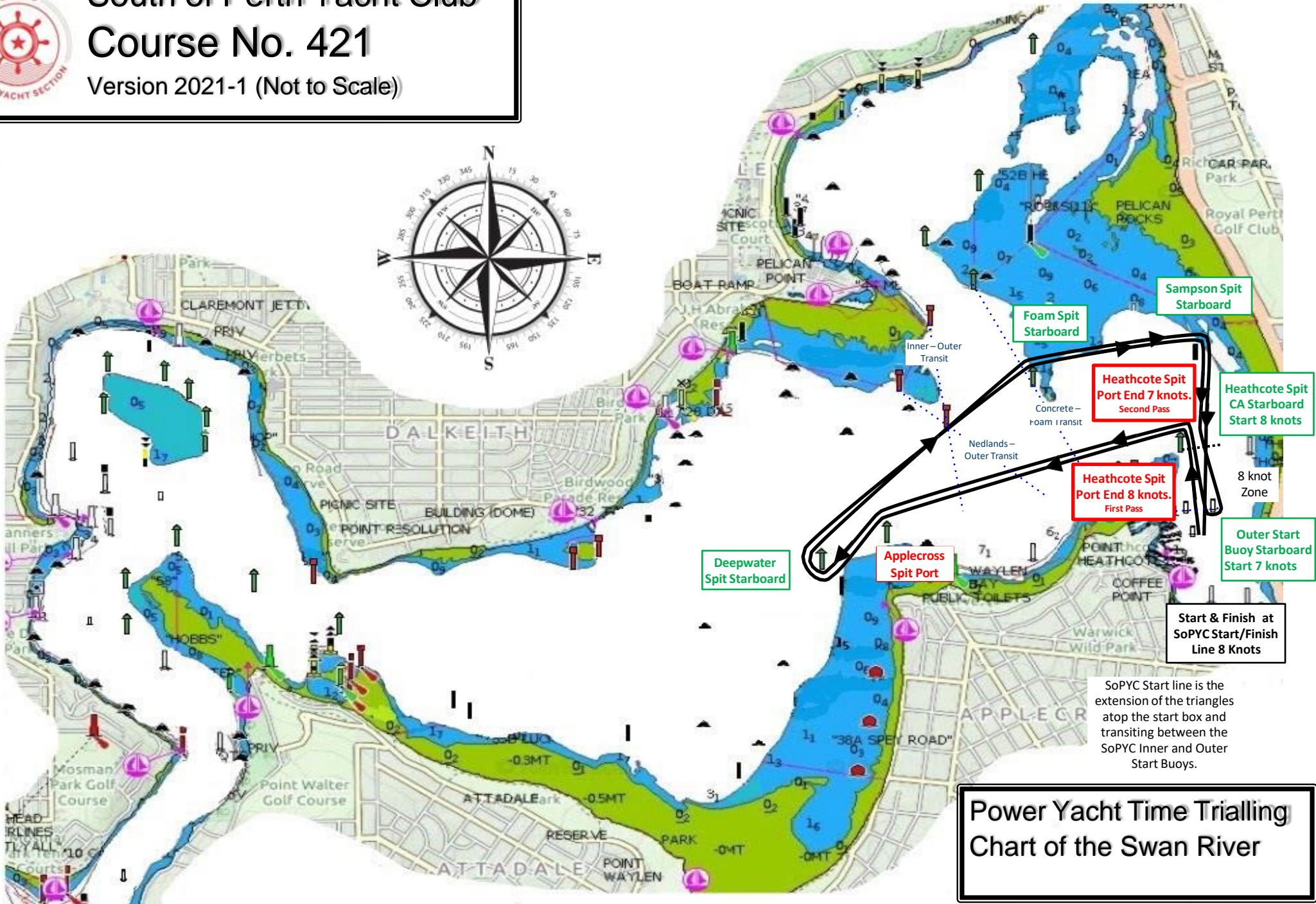


SoPYC Start line is the extension of the triangles atop the start box and transiting between the SoPYC Inner and Outer Start Buoys.

**Power Yacht Time Trialling
Chart of the Swan River**



South of Perth Yacht Club Course No. 421 Version 2021-1 (Not to Scale)



Sampson Spit Starboard

Foam Spit Starboard

Heathcote Spit Port End 7 knots, Second Pass

Heathcote Spit CA Starboard Start 8 knots

Heathcote Spit Port End 8 knots, First Pass

Outer Start Buoy Starboard Start 7 knots

Applecross Spit Port

Deepwater Spit Starboard

Start & Finish at SoPYC Start/Finish Line 8 Knots

SoPYC Start line is the extension of the triangles atop the start box and transiting between the SoPYC Inner and Outer Start Buoys.

Power Yacht Time Trialling Chart of the Swan River

Emergency Response Guide

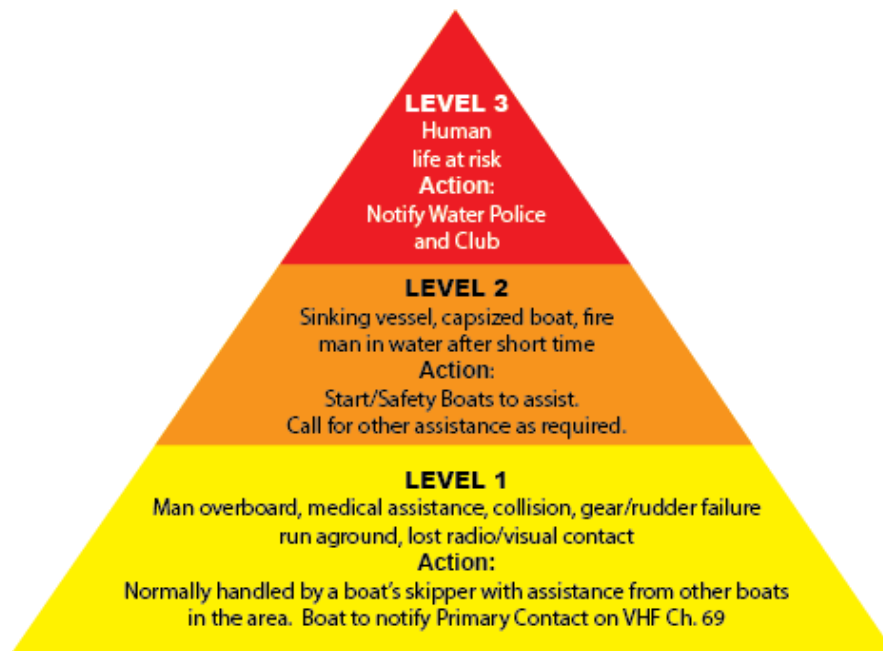
2024 SoPYC Power Time-Trialing

Primary Contact for this event: **Starter: Margaret Cooper 0412 704 945**

If there is an emergency – contact and advise:

- | | |
|--|---------------------------------------|
| 1. Start Boat (Starter) | VHF 69 |
| 2. Water Police VHF 16, 9 & 67 | 000, 112 (mobile) 131444 or 9442 8600 |
| 3. SoPYC Sailing Administrator: Matt Doyle / Tait Kunzli | 0412 745 844 |
| 4. SoPYC General Manager: Michael Sassella | 0419 964 971 |

EMERGENCY RESPONSE PLAN HIERARCHY



Other Emergency Contacts:

Medical/Police/Fire Emergency	000 (Landline)
Medical/Police/Fire Emergency	112 (Mobile)
Fiona Stanley Hospital (10.3 km)	6152 2222
St John Ambulance	9334 1222
Poisons Info Centre	13 11 26
Fremantle Sea Rescue	1800 273 728 or VHF 73 or VHF 16 in an emergency, call sign 6VNDI)

Additional Contacts:

Dept of Marine Safety	1300 863 308
DEC Pollution Response Unit	1300 784 782
Wildcare Helpline	9474 9055
Fishwatch	1800 815 507

Defib Locations:

#1 - Located on the wall in the Senior Clubhouse airlock off the main foyer opposite the male toilets.

2 – Located on the right hand side inside wall of the Training Centre Clubhouse closest to the undercover entrance.

Disembarkation Location for Ambulance:

The Race Officer will coordinate the closest river access to meet an ambulance. Depending on the location of the incident, river access points will include SoPYC Centreboard Clubhouse Foreshore and floating jetty, SoPYC Main fueling Jetty, Applecross Jetty.

EMERGENCY CONTACTS



Emergency Services

	Emergency	Non Emergency
Police	000	131 444
Fire	000	9335 6262
Ambulance	000	9334 1222
Water Police	9442 8600	VHF 16 or 67 HF 6215, 4125, 8291, 8176
Fremantle Sea Rescue Marine	9335 1332	VHF 16 or 73
SES Emergency Assistance	132 500	
Poisons Information	13 11 26	
Dept of Fire & Emergency Services	9395 9201	Marine Services
DoT Marine Safety Hotline	1300 863 308	

Medical Centres

Fiona Stanley Public Hospital	6152 2222	11 Robin Warren Drive, Murdoch
Royal Perth Hospital	9224 2244	Wellington Street, Perth
Sir Charles Gairdner Hospital	6457 3333	Hospital Avenue, Nedlands
St John of God Murdoch Hospital	9366 1111	Barry Marshall Parade, Murdoch
Applecross Medical Group (7 days)	9364 6444	764 Canning Highway, Applecross
Reynolds Road Medical Centre	9364 6633	857 Canning Highway, Applecross
Emergency Dental - Weekends/Hols	6457 7626	Hospital Avenue, Nedlands

Environment

Oil Pollution Reporting (24hrs)	9480 9924
Wildcare Helpline	9474 9055
DBCA – Parks & Wildlife Services	9474 9055

South of Perth Yacht Club

Race Control	0412 704 945	VHF 69 'SoPYC Race Control'
On Water Group	9364 5844	VHF 69 'SoPYC Shore Base'
General Manager	0422 418 143	Michael Sassella
Sailing Administrator	0412 745 844	Matt Doyle
Head Coach	0423 429 686	Denis Jones
Facilities Manager	0412 717 480	Dan Lawrence

Local Yacht Clubs

Claremont Yacht Club	9384 8226	Race Control	J407197337	VHF 77
East Fremantle Yacht Club	9339 2208	Race Control		VHF 77
Nedlands Yacht Club	9386 5496	Race Control		VHF 77
Perth Flying Squadron Yacht Club	9386 6437	Race Control	J488332785	VHF 77
Royal Freshwater Bay Yacht Club	9384 9338	Race Control	J422654833	VHF 77
Royal Perth Yacht Club	9389 1555	Race Control	J408919667	VHF 77
Fremantle Sailing Club	9435 8800	Race Control		VHF 72
The Cruising Yacht Club of WA	9527 5468	Race Control	J401006093	VHF 72

GUIDE TO SWAN RIVER YACHT RACING COURSE MARKS

★ NOT FOR NAVIGATIONAL USE ★

Scale 0 1 km Grid 2 km




LEGEND

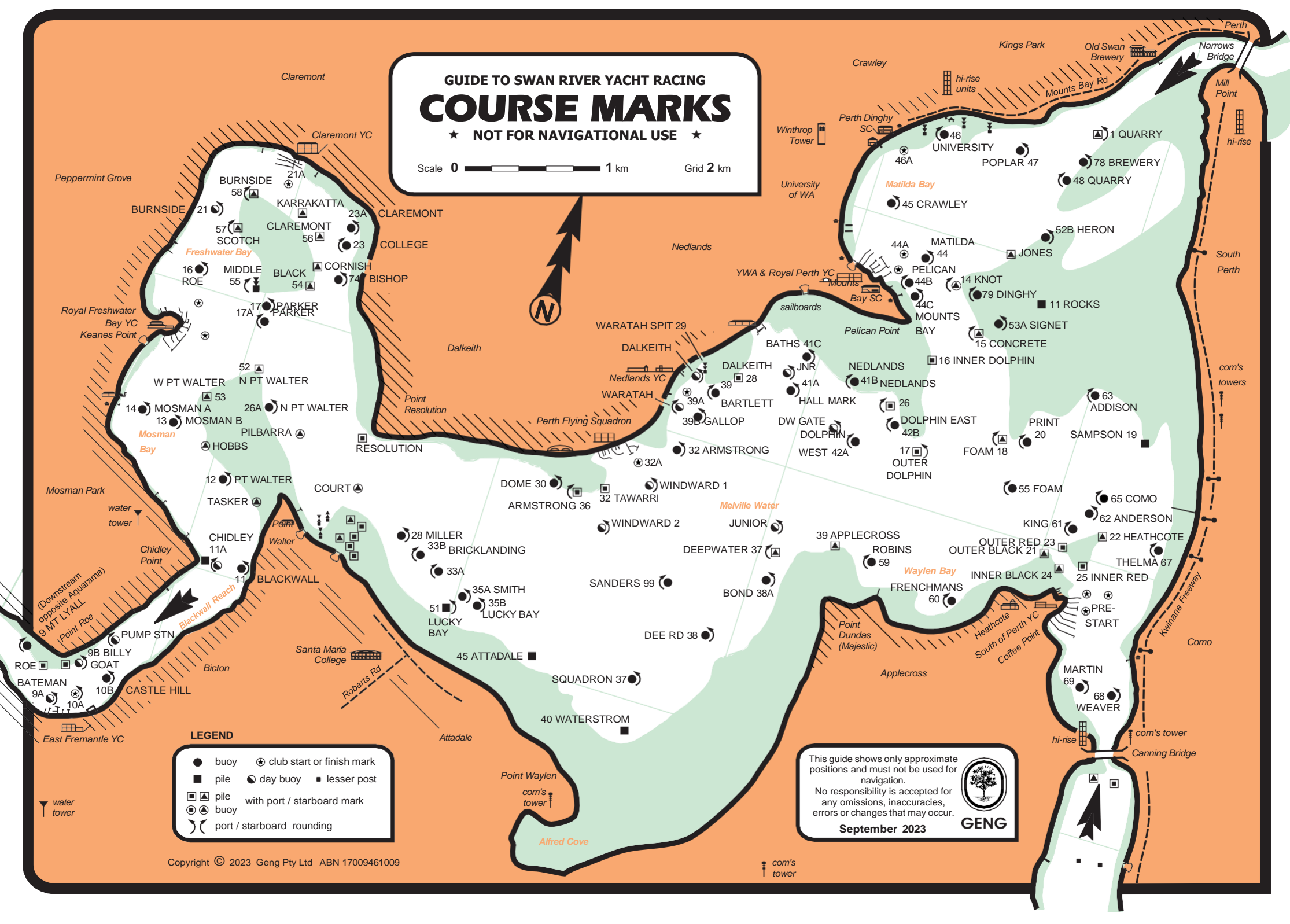
- buoy ⊕ club start or finish mark
- pile ● day buoy ■ lesser post
- ▣ pile with port / starboard mark
- ⊙ buoy
- ⌋ port / starboard rounding

This guide shows only approximate positions and must not be used for navigation.
No responsibility is accepted for any omissions, inaccuracies, errors or changes that may occur.

September 2023



GENG



The Power Section would like to thank all our sponsors for the upcoming season and recognize your valuable contribution in supporting this event!



